

we all *sew*

made to create **BERNINA**⁺



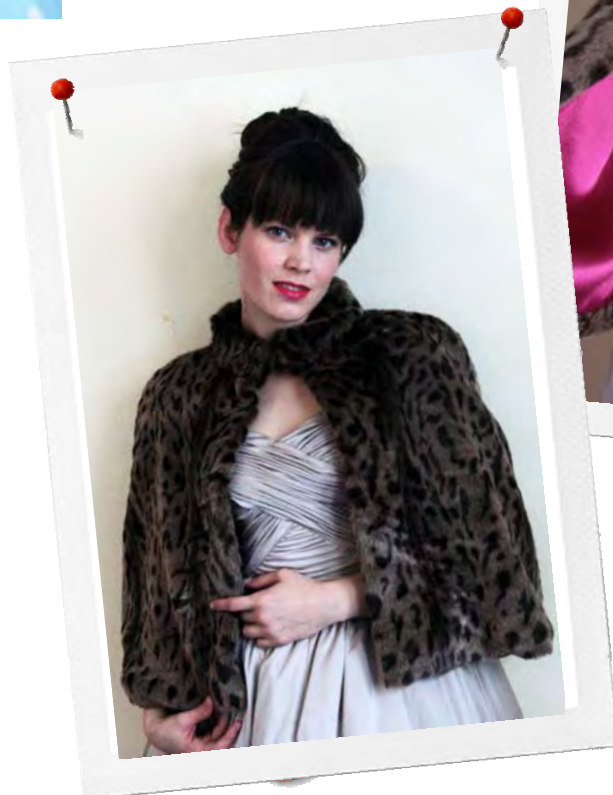
Created by Nicole Smith

Faux Fur Capelet

materials and tools

- 1½ yards faux fur fabric
- 1½ yards lining fabric
- ¼ yard of fusible interfacing
- Coat hook-and-eye set
- Ready-to-wear coat for tracing
- Pattern paper
- Marking tools
- Scissors
- Thread
- Hand-sewing needle

Faux fur achieves true style in this simple, classic design. Go ahead and dress it up or down, wrap yourself in a bit of glam and make a striking entrance. Nothing draws the eye like feline elegance.



we all *sew*

made to create **BERNINA**⁺

Faux Fur Capelet

step one

- Lay your coat on the pattern paper.
- Trace the shoulders, neckline, and center fronts to form the basis of your cape pattern.
- Add to the lower edges to make the fronts the length you would like for your finished cape.

step two

- Turn the coat over and trace the shoulders, neckline, and back for the basis of your pattern.
- Add to the lower edges to make the back the length you would like for your finished cape.

step three

- To complete the capelet front pattern:
 - ◇ Add a 2"-wide facing to the center front edges.
 - ◇ Add a 1½"-wide hem allowance to the lower edges.
 - ◇ Add a ½"-wide seam allowance to all of the edges.
 - ◇ (See larger illustration on page 7.)

step four

- To complete the capelet back pattern:
 - ◇ Add a 1½"-wide hem allowance to the lower edges.
 - ◇ Mark the center back; this is the center back fold line.
 - ◇ Add a ½"-wide seam allowance to all edges except the center back fold line.
 - ◇ (See larger illustration on page 8.)



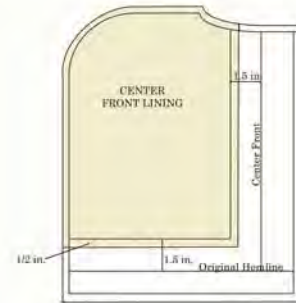
we all *sew*

made to create **BERNINA⁺**

Faux Fur Capelet

step five

- To complete the capelet front lining pattern:
 - ◊ Trace a copy of your cape front pattern.
 - ◊ Bring in the center front and hemline edges 1½".
 - ◊ Add a ½"-wide seam allowance to the new edges.
 - ◊ (See larger illustration on page 9.)



step six

- To complete the capelet back lining pattern:
 - ◊ Trace a copy of your cape back pattern.
 - ◊ Bring up the hemline edges 1½".
 - ◊ Add a ½"-wide seam allowance to the new edge.
 - ◊ (See larger illustration on page 10.)



Cutting Tip

When cutting faux fur, take care to cut through the fur's backing only, and avoid cutting through the fur's nap.

step seven

- Cut two capelet fronts from the faux fur—one for the right side, one for the left side.
- Cut one capelet back—on the fold—from the faux fur.

step eight

- Cut two capelet front linings from the lining fabric—one for the left side, one for the right side.
- Cut one capelet back lining—on the fold—from the lining fabric.



we all *sew*

made to create **BERNINA**⁺

Faux Fur Capelet

step nine

- With right sides together, sew the two capelet fronts to the capelet back along the shoulder seams using a ½"-wide seam allowance.

step ten

- Repeat, joining the two lining fronts to the lining backs.

step eleven

- Turn the faux fur hem under 2"; press.
- Turn each front facing under 2½"; press.

step twelve

- Hand-stitch the facing to the hem allowance where they overlap, turning under ½" along the facing's raw edge.



we all *sew*

Faux Fur Capelet

step thirteen

- With right sides together, pin the lining to the capelet, aligning the hem and facing edges.
- Stitch using a ½"-wide seam allowance.

step fourteen

- Turn the capelet right side out.
- Turn under ½" along the faux fur and lining necklines.
- With wrong sides together, align and pin the necklines.
- Topstitch ¼" from the edge.

step fifteen

- Measure your capelet's neckline and add 1". This will be the length of your collar.



step sixteen

- Cut a 4"-wide rectangle of faux fur the length of your collar.
- Cut a strip of fusible interfacing the length of your collar and 2" wide.
- Fuse the interfacing to the wrong side of the collar, aligning one long edge.



we all *sew*

made to create **BERNINA**⁺

Faux Fur Capelet

step seventeen

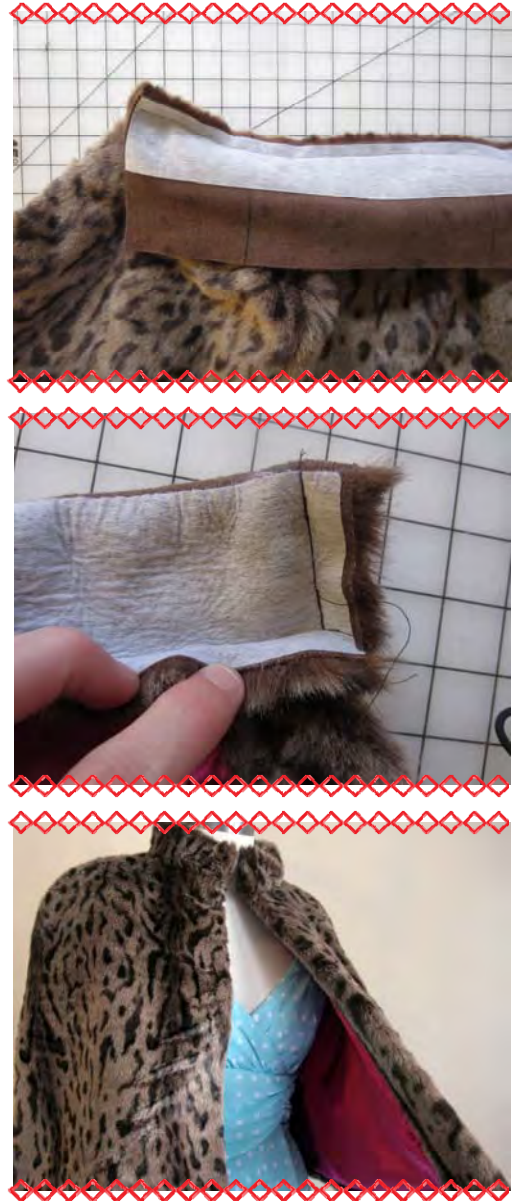
- With right sides together and raw edges aligned, pin one long edge of the collar to the cape with the collar's ends extended $\frac{1}{2}$ " beyond the sides of the cape.
- Stitch in place with a $\frac{1}{2}$ "-wide seam allowance.

step eighteen

- Turn under the free long collar edge $\frac{1}{2}$ ".
- Fold the collar right sides together along the interfacing edge.
- Sew each short end with a $\frac{1}{2}$ "-wide seam allowance.
- Trim the corners and turn the collar right side out.

step nineteen

- Hand-stitch the collar closed along the inside edge of the neckline.
- Sew the hook and eye to the wrong side of the collar along the center front edges.



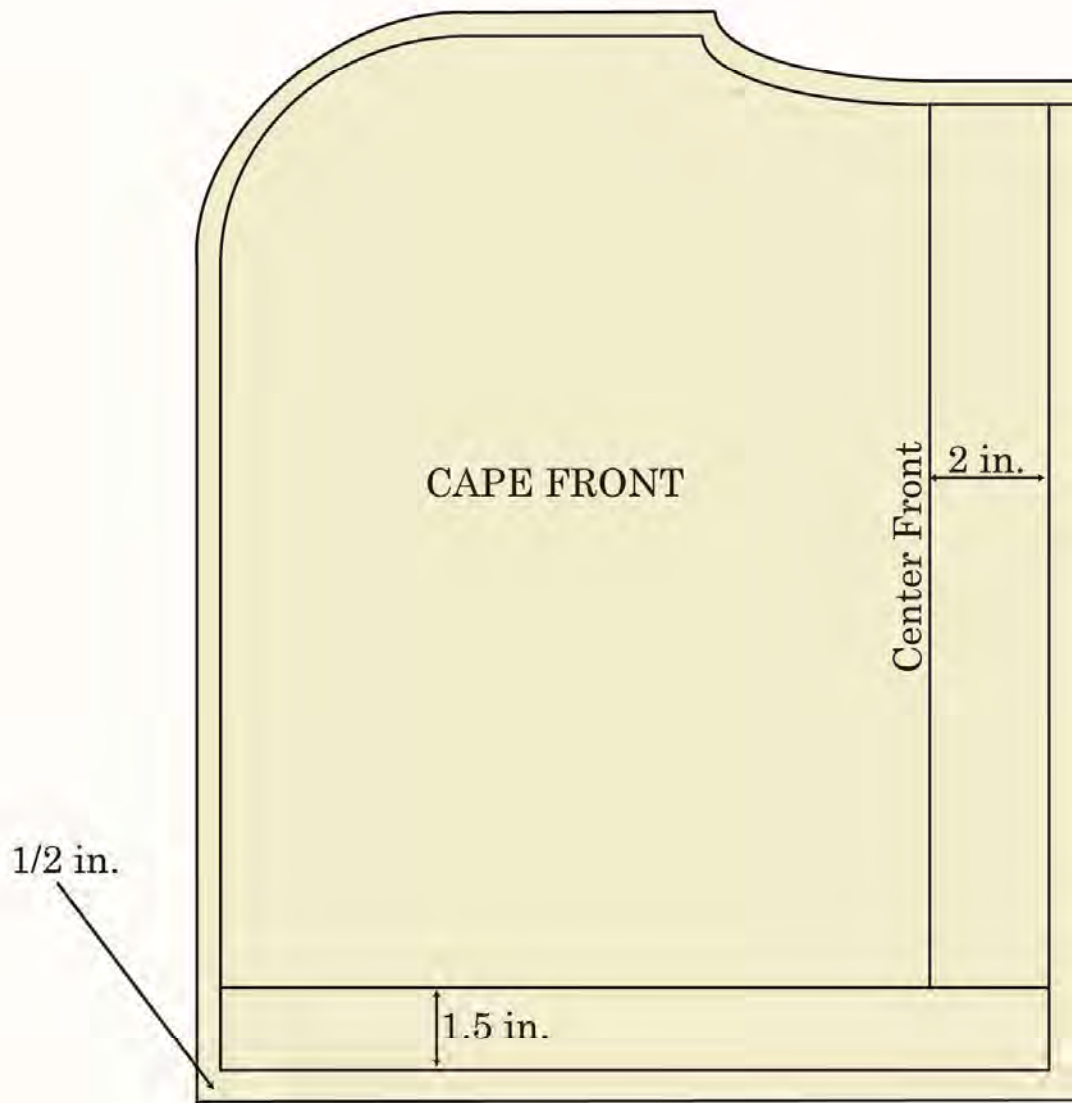
we all **sew**

made to create **BERNINA**⁺

Faux Fur Capelet



Capelet Front Pattern Illustration



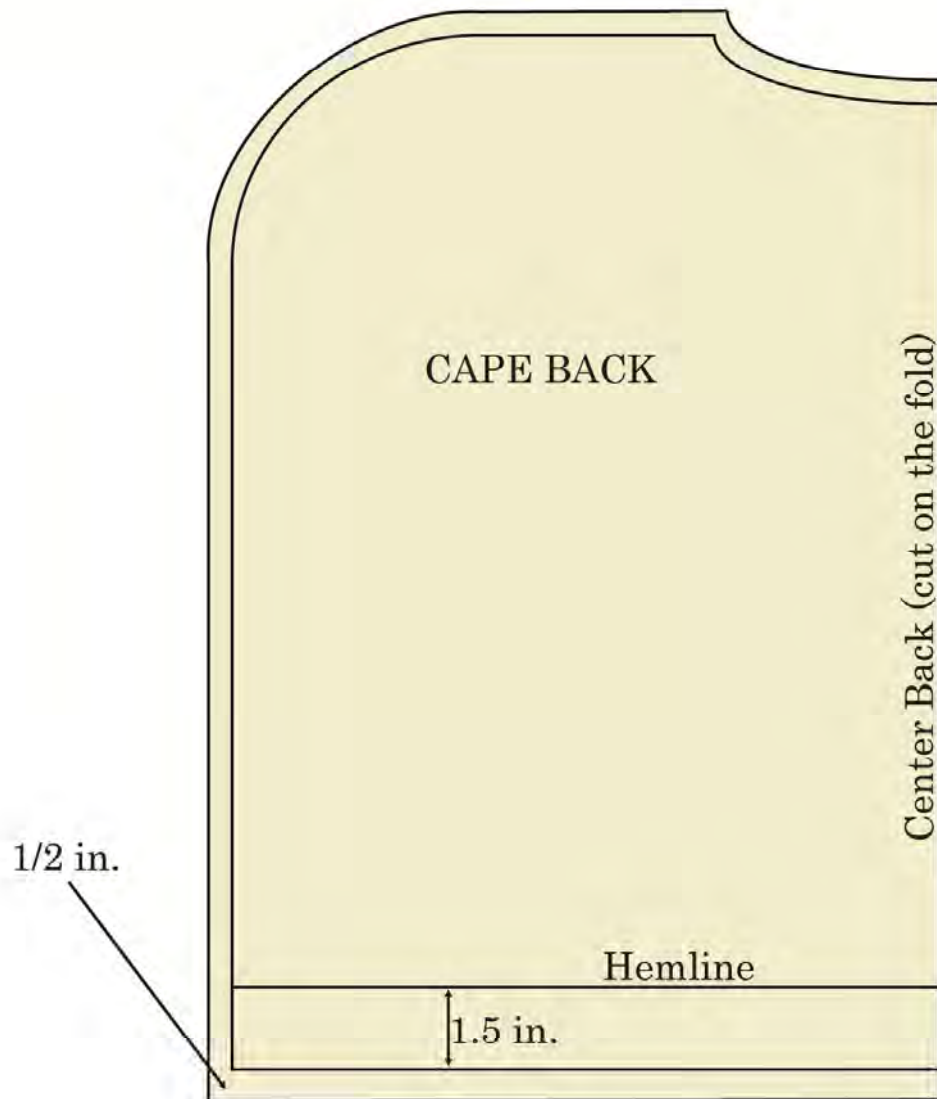
we all **sew**

made to create **BERNINA**⁺

Faux Fur Capelet



Capelet Back Pattern Illustration



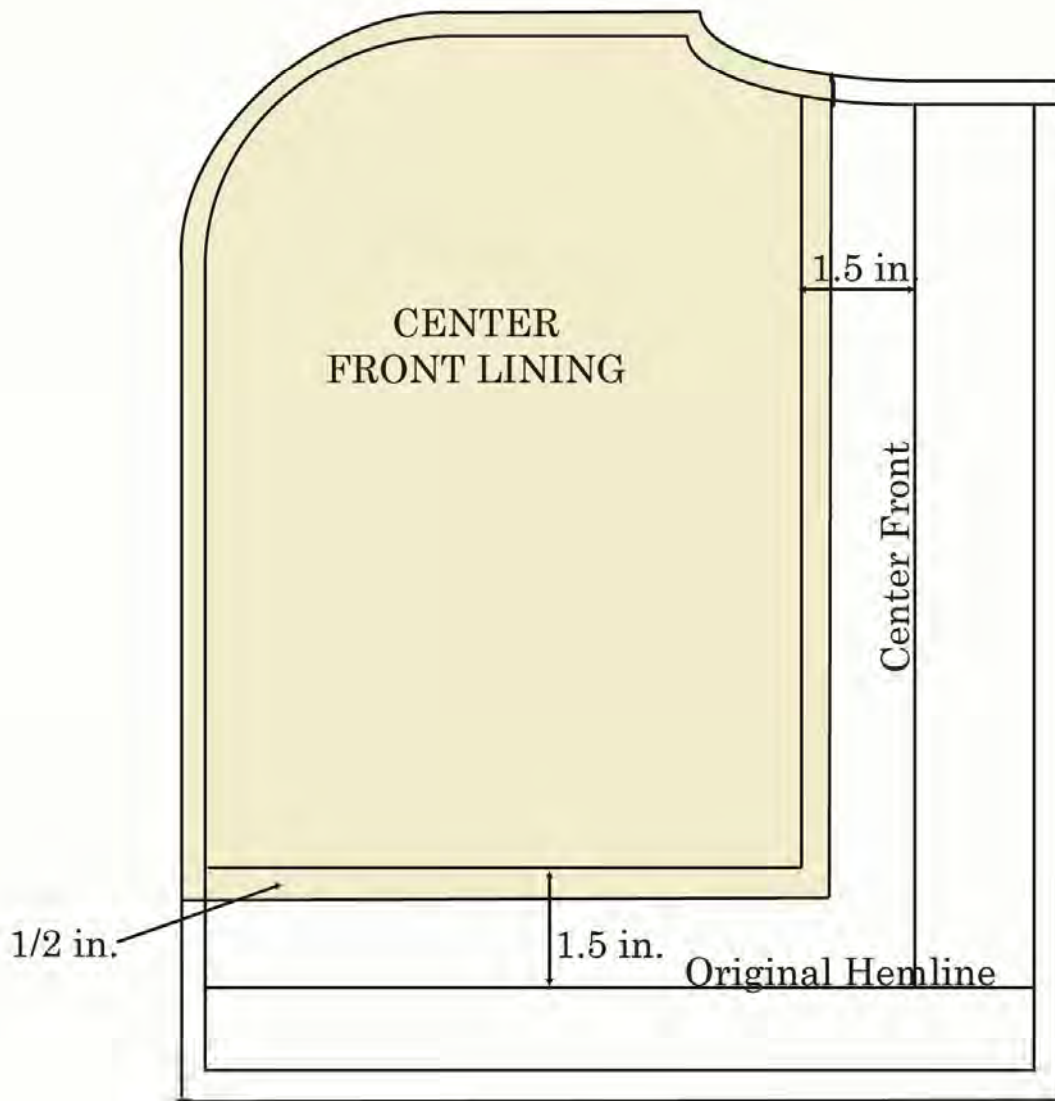
we all **sew**

made to create **BERNINA**⁺

Faux Fur Capelet



Capelet Front Lining Pattern Illustration



we all **sew**

made to create **BERNINA**⁺

Faux Fur Capelet



Capelet Back Lining Pattern Illustration

