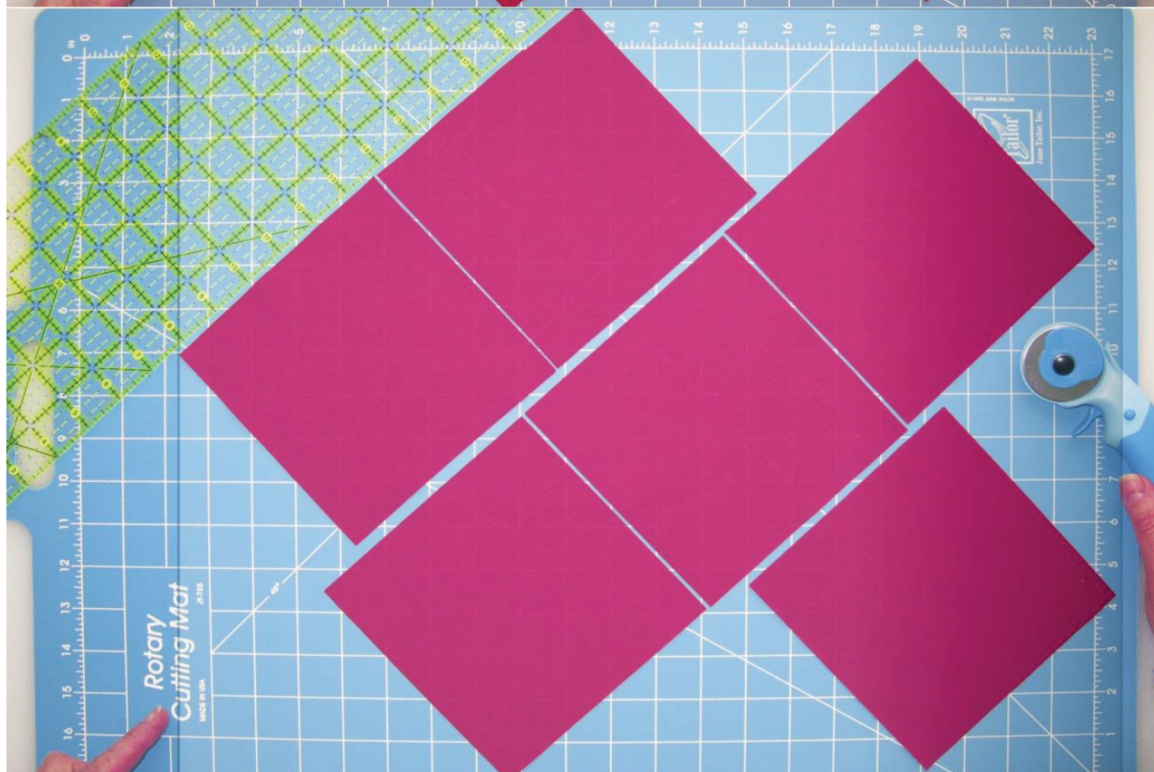
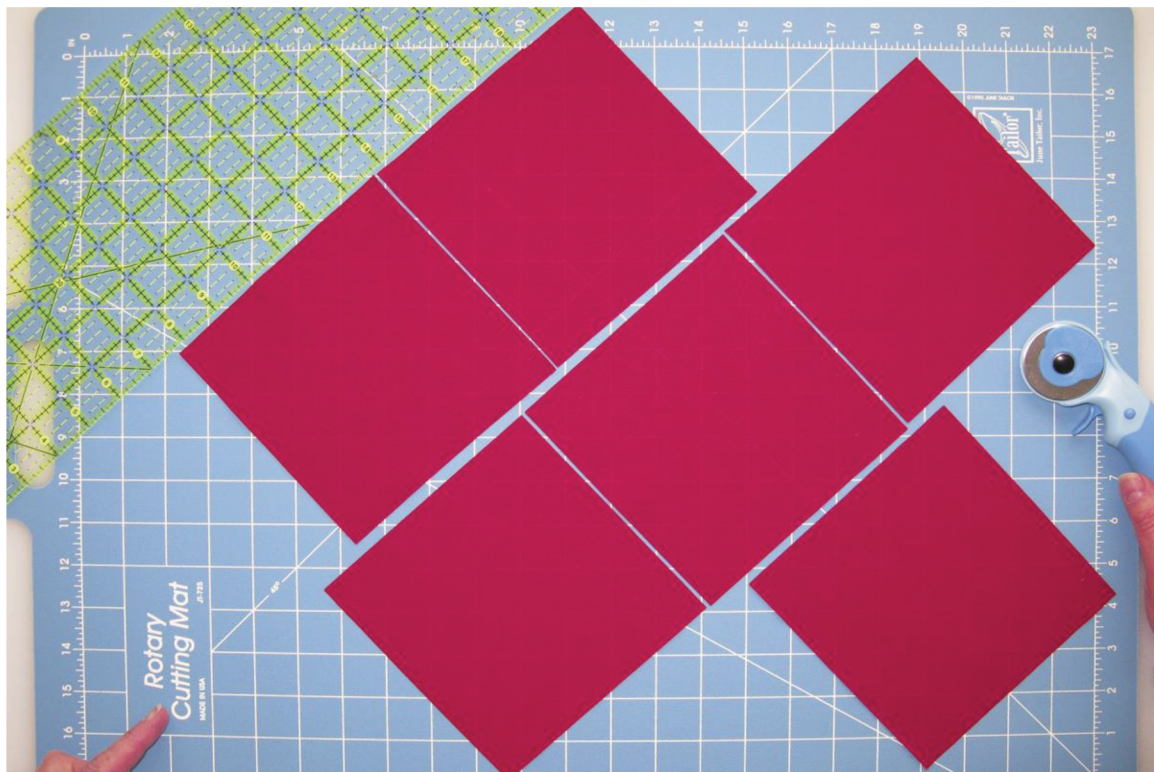


Bias Fabric Layout for Festival Cuffs

Translucent overlay represents a fat quarter (FQ). Follow same steps for skinny quarters (SQ).



BERNINA
made to create

enJOY! compliments of www.fiberella.com and Paula Scaffidi

Bias cut fabric distorts easily while handling.

Support it with your palms when moving it.

Use a press-lift-press motion with the iron instead of sliding it around. :-)

Yield: 30 links

1. Cut paper shapes:
 - quantity six , 6" squares (FQ)
 - OR quantity four, 6" x 8 ½" rectangles (SQ)
2. Align fabric (cross wise grain) with cutting mat horizontal lines.
3. Chalk a 45 degree reference line (find one on your mat) onto the fabric by aligning the 45 degree *ruler mark* with any horizontal mat line.
4. See the diagonal red fabric columns?
Establish where diagonal columns will be located on your fabric.
 - move ruler around maintaining a 45 degree angle to as paper placement guide
 - arrange papers in 45 degree diagonal columns until all papers fit:
 - *corners down*
 - *snugged up together*
 - *sides neatly parallel to your reference chalk line*
 - you may have to slide papers up and down inside the 45 degree columns
 - try moving your first column closer to a corner (sized for one paper)
 - or farther away from a corner (sized for two papers)
 - after these all fit, mark a chalk cutting line for the first column and remove all papers
5. Cut the first 6" wide column or strip and continue from there. During this process, it's best not to move the fabric. Once all strips are cut, use palms to individually lift and set aside.
6. Align a strip horizontally on mat.
Vertically cut your 6" squares (FQ) or 8 ½" x 6" rectangles (SQ). Repeat.