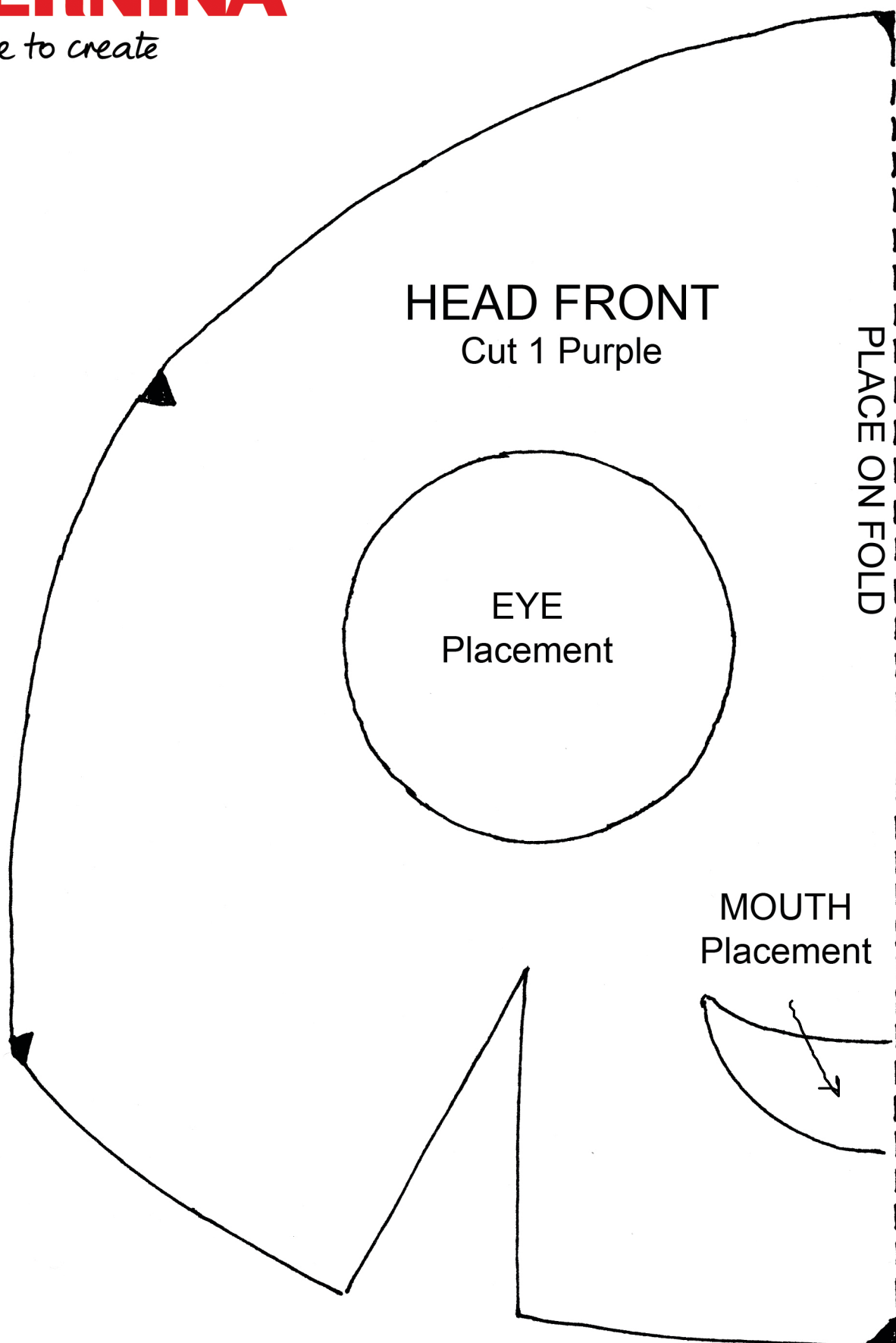


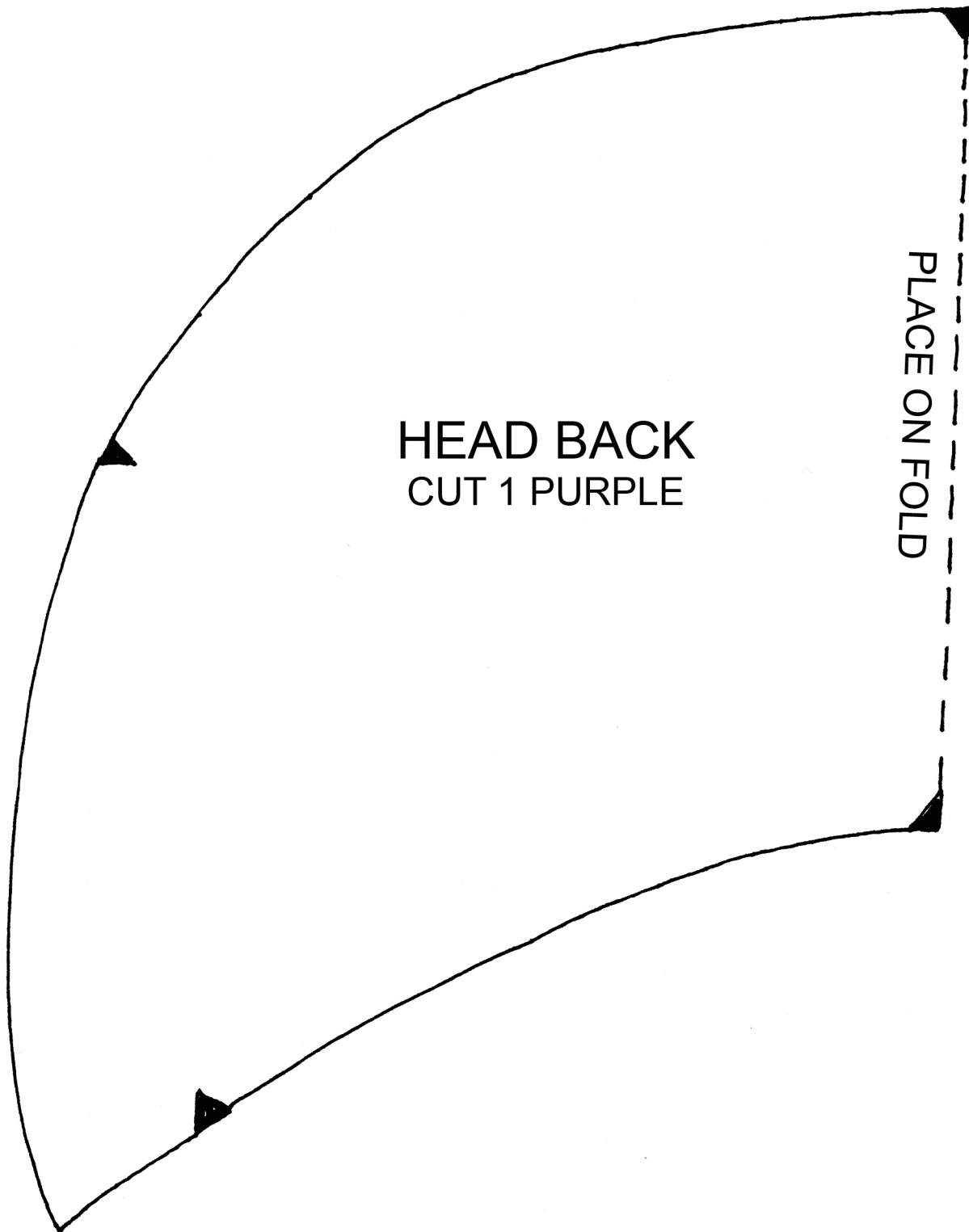
BERNINA

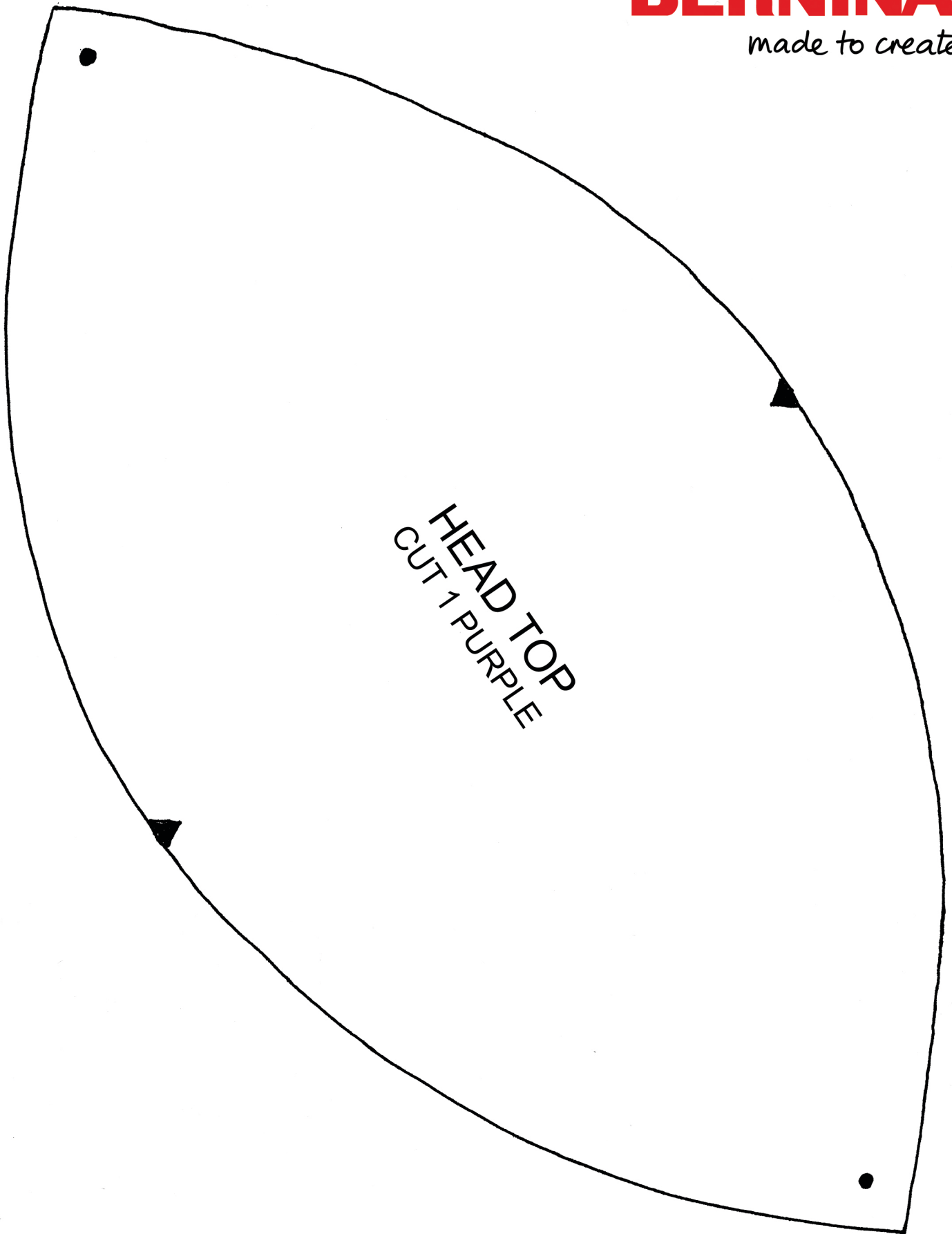
made to create



BERNINA

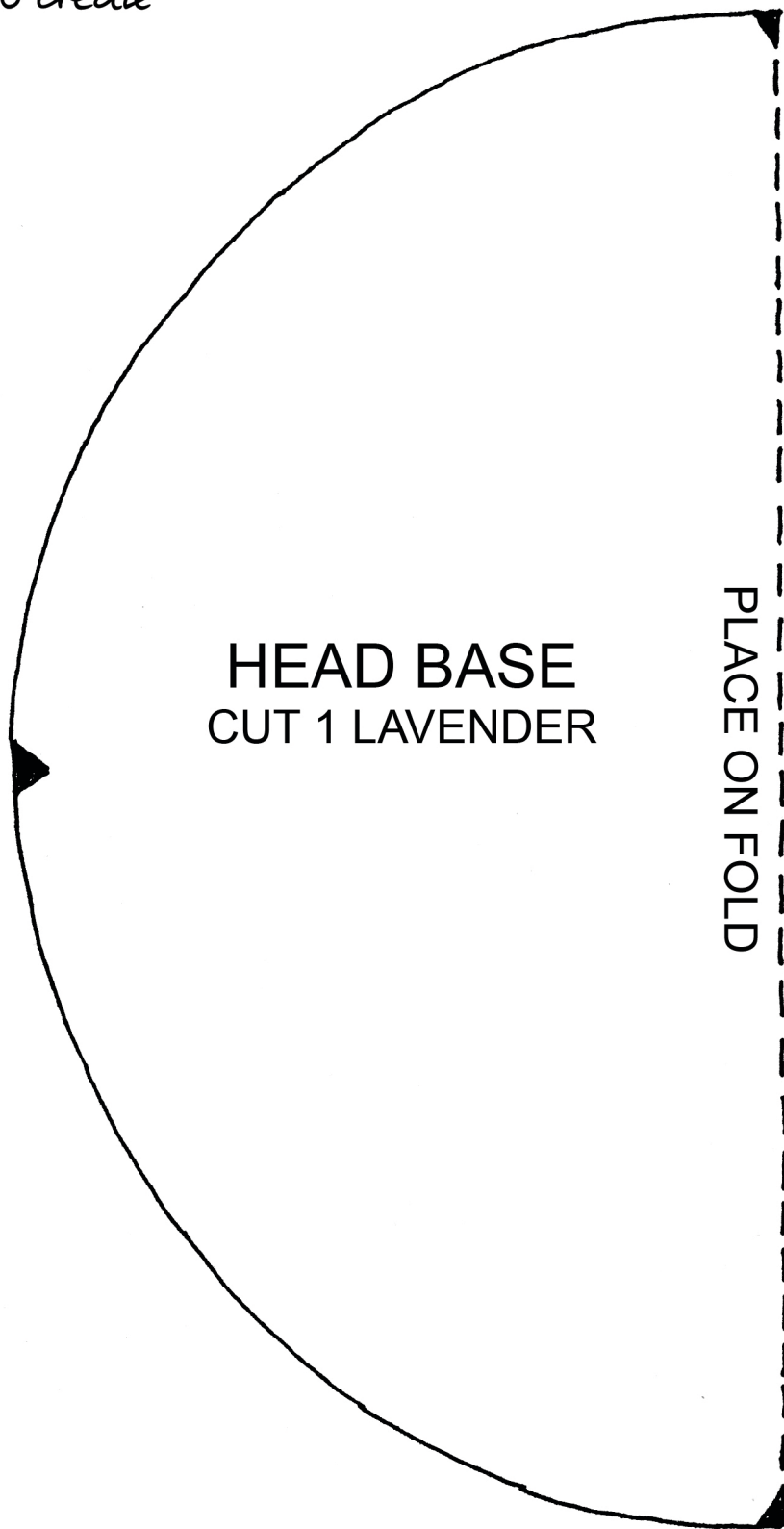
made to create





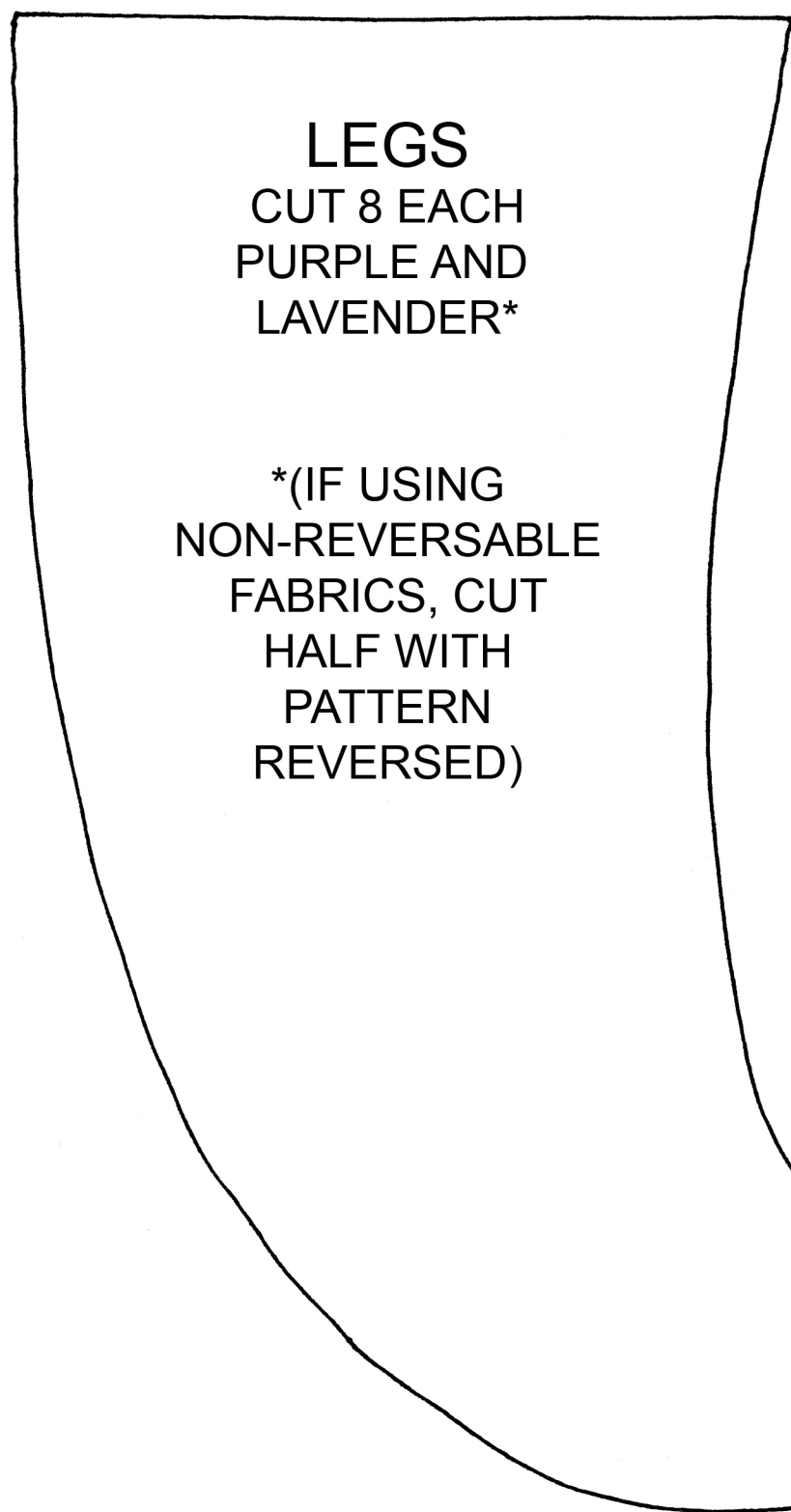
BERNINA

made to create



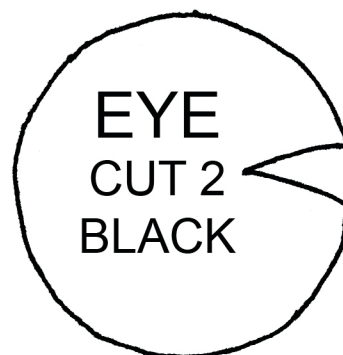
BERNINA

made to create

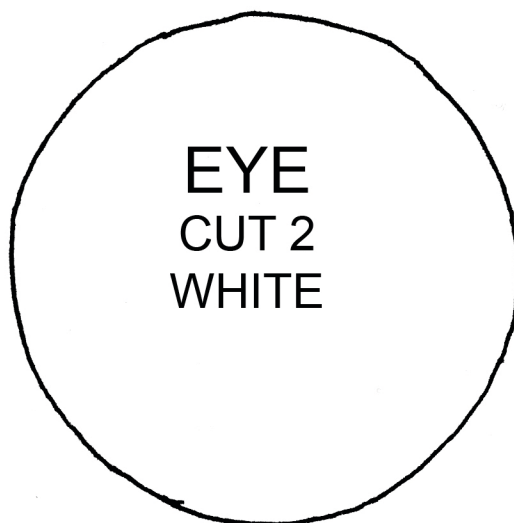


LEGS
CUT 8 EACH
PURPLE AND
LAVENDER*

*(IF USING
NON-REVERSABLE
FABRICS, CUT
HALF WITH
PATTERN
REVERSED)



EYE
CUT 2
BLACK



EYE
CUT 2
WHITE



MOUTH
CUT 1 BLACK