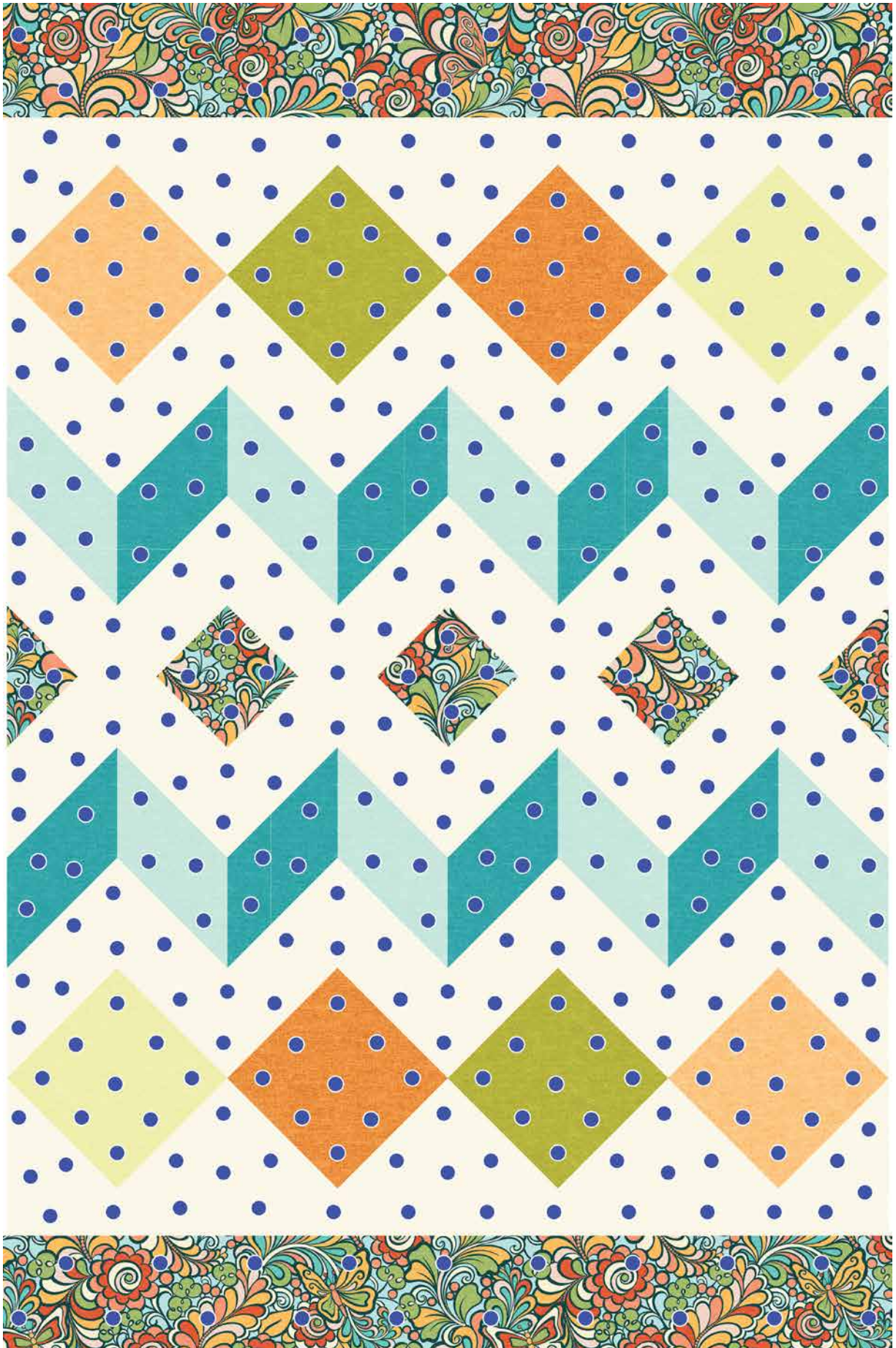


Diamonds Quilting Month 1



AMANDA *AM* MURPHY



Pin Basting Diagram



Thread Basting Diagram



Quilting Order - Month 1

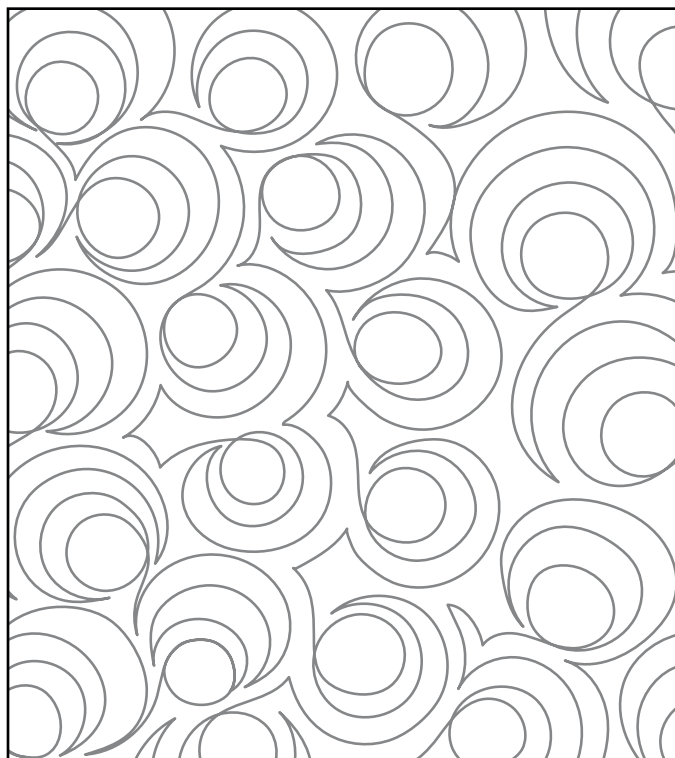
**Please note that all instructions are written for quilting on a Sit-Down Q Series since this project was commissioned to celebrate the advent of the BERNINA Q16. See the notes in the accompanying blog post on weallsew.com for modifications for a domestic machine or Q Series on a frame.*

Baste your quilt top using the method of your choice as described on weallsew.com. Then...

1. Baste all the way around the quilt in the binding area, about 1/8" in from its raw edges, using BSR2 and SPI 2 or 4. This is to prevent the quilt top and batting from shifting.
2. Using BSR2 and the Background thread, use the Every Angle ruler to quilt "along-the-ditch" along the seams that separate the borders from the rest of the quilt top. By "along-the-ditch," I mean a hairline away from the seam, on the Background fabric.
3. Quilt "along-the-ditch" around the small diamonds in the center of the quilt. Use the Every Angle ruler to quilt echo lines around these diamonds, using the lines on the ruler to quilt 3/4" away from the seams. *Use white chalk if needed to lightly mark your turning points.*
4. Quilt "along-the-ditch" of the zigzags. Use the Every Angle ruler to quilt echo lines above and below the zigzags, using the lines on the ruler to quilt 3/4" away from the seams. *Use white chalk if needed to lightly mark your turning points.*
5. Quilt "along-the-ditch" around the large diamonds. Don't echo these.
6. Quilt the parallel lines above the top row of diamonds and below the bottom row of diamonds. Start in the middle of the rows and work out, traveling over your previous stitching to get from line to line. These lines can be 3/4" or 1/2" apart.
7. Quilt the free-motion fills of your choice in the rest of the background in the stitch regulation mode of your choice. The designs I used are pictured on the right. Watch the video on weallsew.com to see them quilted.



Open Petals Fill



Full Moon Fill