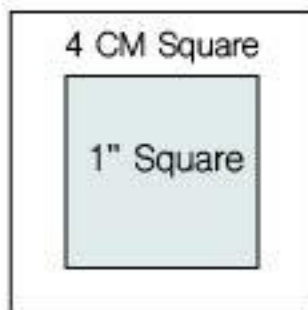




Round Collar  
Cut 2 Fabric  
Cut 1 Interfacing



Center Back

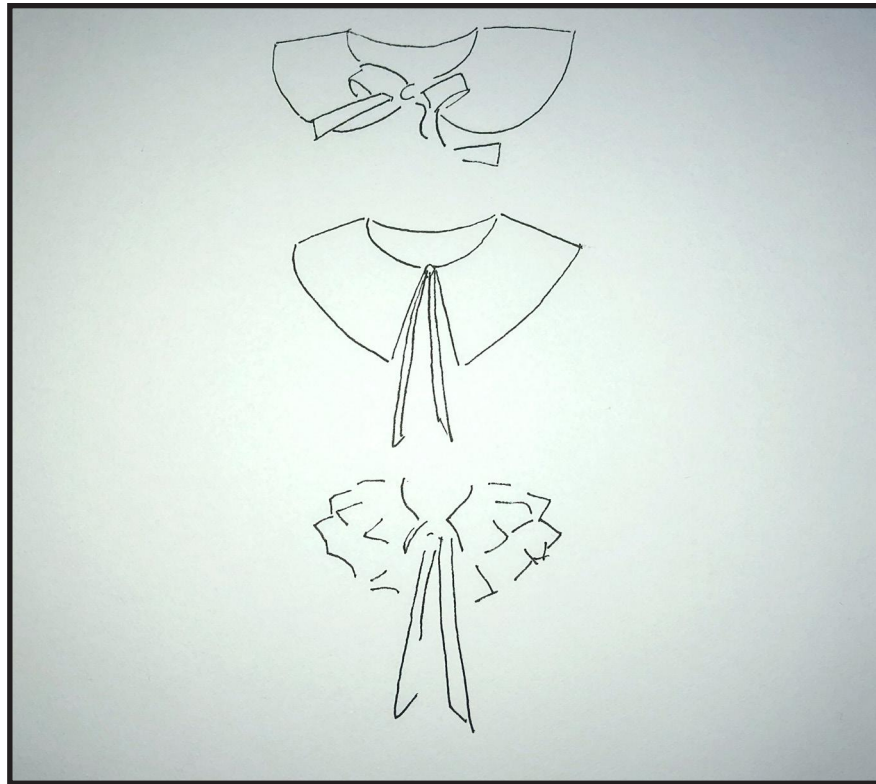


#### Terms of Use

This pattern, instructions and photographs are protected by copyright. No part of it can be copied, used, shared or resold. No part can be altered and sold as your own. It is intended for personal use. If you are interested in selling products made from this pattern please contact me for details. Thank you for respecting the time and effort I've put into creating my work. [littlestitchstudio.com](http://littlestitchstudio.com)

# The Collars Pattern

With small and large rounded collar,  
pointed and ruffle variations



To be used in tandem with instructions and tutorial on [weallsew.com](http://weallsew.com).

One size fits most.



Mark for Ribbon

The diagram shows a large, white, U-shaped curve. On the right-hand side of the curve, there are two solid black dots. From each dot, a thin, dashed line extends downwards and slightly inwards towards the curve, indicating the placement of ribbon.

1

2



Pointed Collar  
Cut 2 Fabric  
Cut 1 Interfacing

4

5

2

3

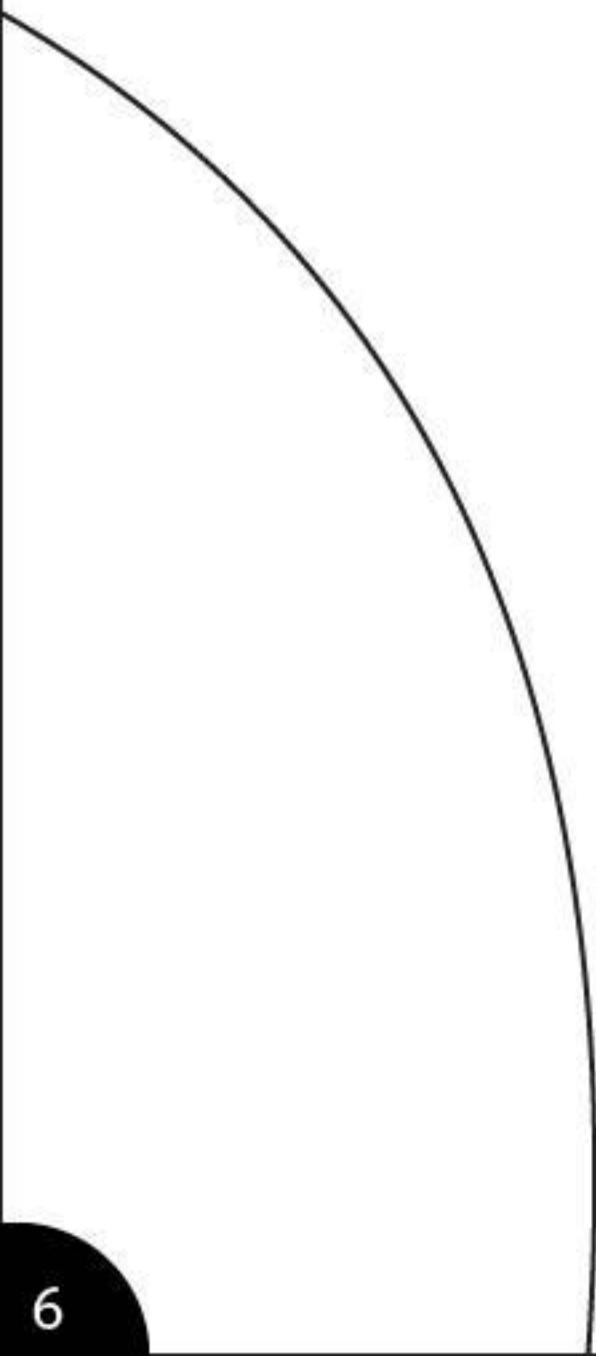
Center Back



5

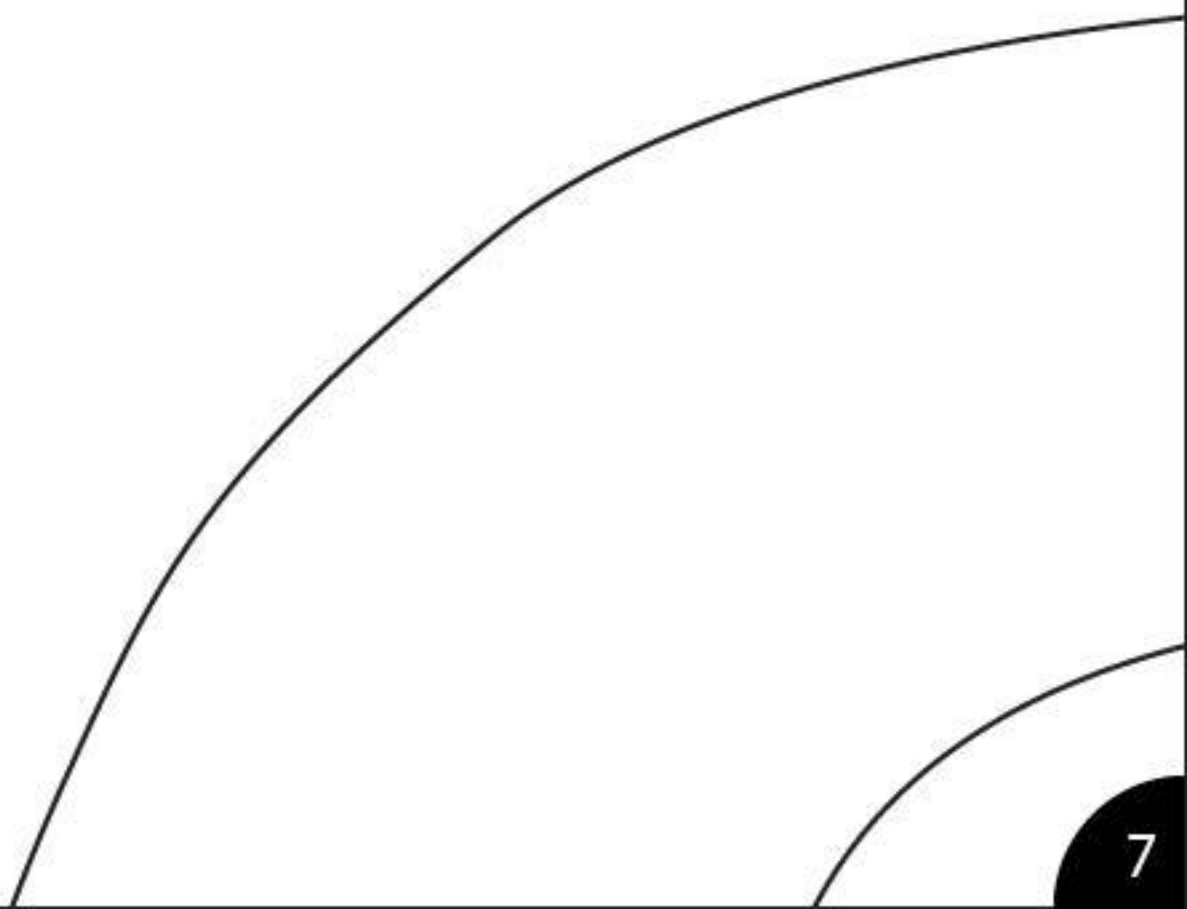
6

3



6





4

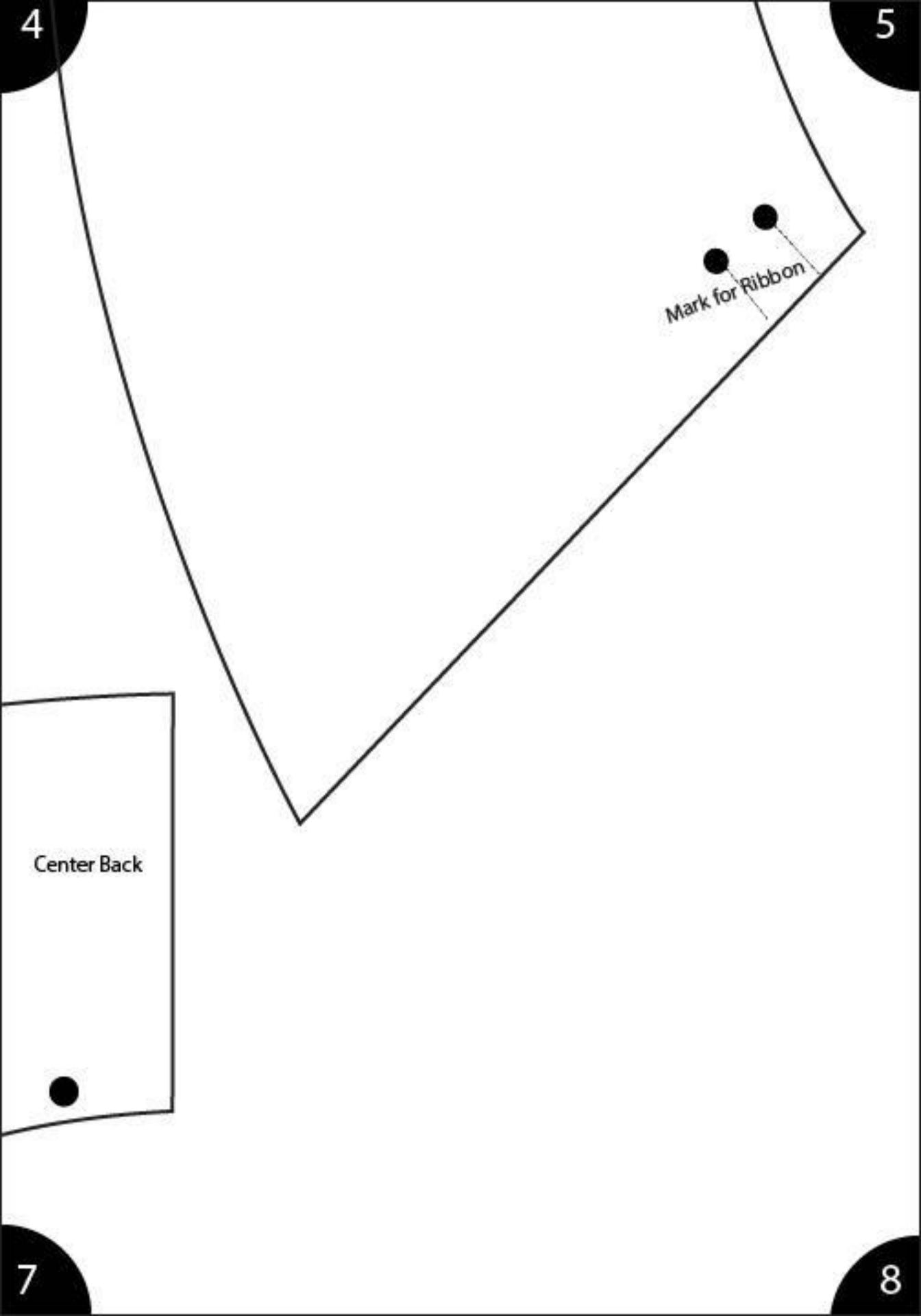
5

Mark for Ribbon

Center Back

7

8



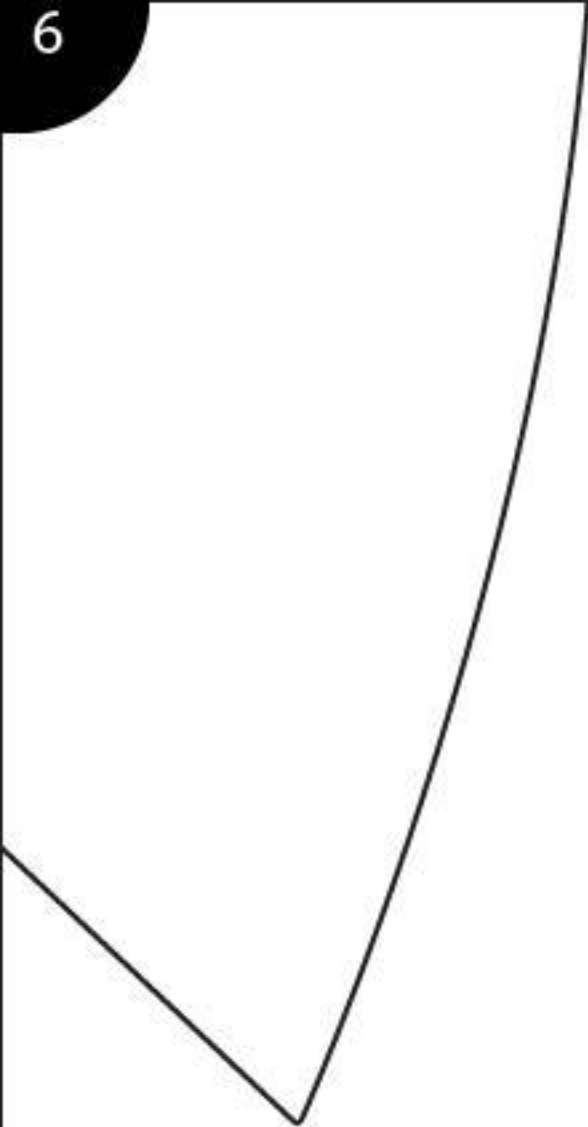
5

6



8

9



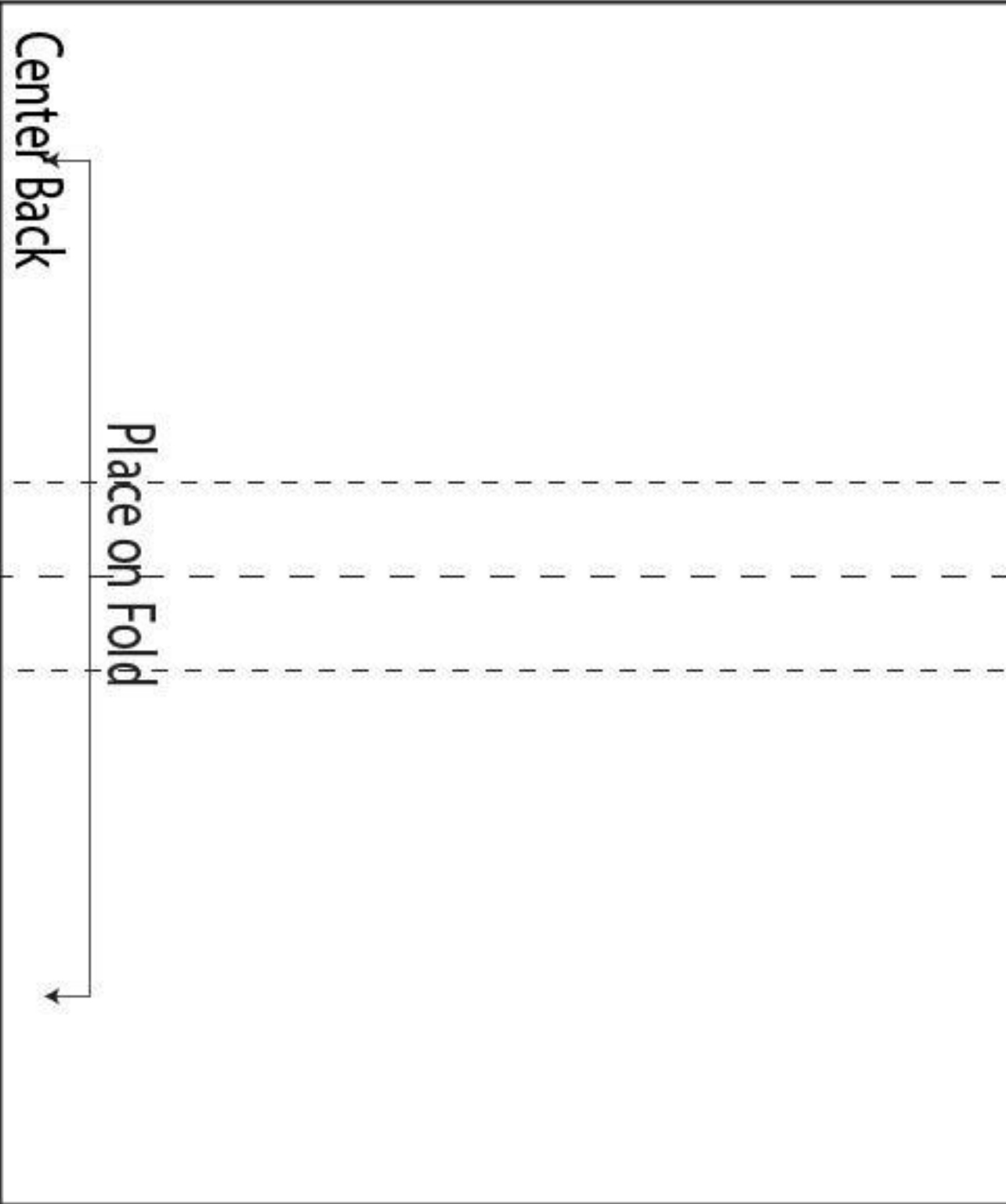
Small Round Collar

Cut 2 Fabric

Cut 1 Interfacing

Mark for Ribbon





Place on Fold

Center Back

Ruffle Collar  
Cut 2 on Fold

Stitching Line  
Mark to create rick

Carbon casing