

FABRIC COVERED
Party Hats

..... BY KHARA PLICANIC

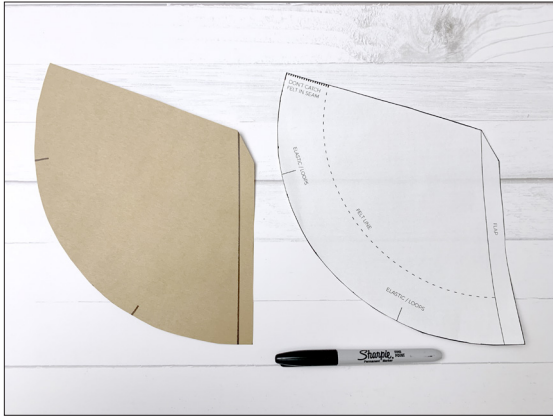




Materials

- ☀️ pattern (see page [5](#))
- ☀️ fabric: 10 x 21-inches (about 1/3 yd) or 2 fat quarters (one for the exterior one for the interior)
- ☀️ felt for trim: 2 x 14-inches (in a pinch, can be cut diagonally from a 9 x 12-inch sheet)
- ☀️ yarn for pompom
- ☀️ elastic and/or ribbon
- ☀️ card stock (8.5 x 11-inches)
- ☀️ scissors (and optional pinking shears)
- ☀️ pen/pencil and erasable pen (like a [Pilot Frixion](#))
- ☀️ ruler or straight edge
- ☀️ iron
- ☀️ sewing machine
- ☀️ needle and thread (or hot glue)
- ☀️ thimble (optional)

Instructions



1. **Print and trace the pattern.** Cutout the printed pattern and trace it onto the card stock, making sure to transfer the elastic and flap markings, then cut it out. The paper piece is the pattern and the card stock will actually end up sewn into the project.

2. **Cut out the fabric pieces.** Place inner and outer fabrics together with right sides facing and trace around the entire card stock piece using removable pen. (This will become our stitching line.)

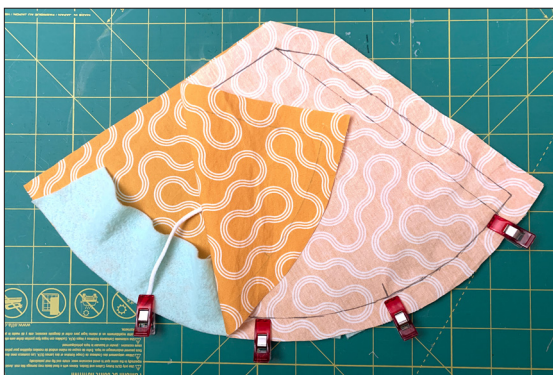
Eyeball an extra 1/2-inch all the way around, and cut out.



3. **Add the fringe.** Cut a piece of felt measuring 2 x 15-inches and sandwich it between the two hat pieces, aligning the long edge of the felt with the curved edge of the fabric pieces. The rest of the felt should lay to the inside and be covered by the hat pieces. **Note:** Make sure not to catch any portion of the fringe in the straight side seam. See the pattern for reference.

Cut a piece of elastic approximately 12-inches long and sandwich it on top of the felt with the slack on the inside and the ends hanging out at the marked spots on the template. Make sure they stick out just a bit to ensure they will be caught in the seam. (If you prefer making loops to tie the elastic in later, add them the same way.)

Use pins or wonder clips to hold in place.





4. **Stitch & trim.** Stitching directly on the line drawn in Step 3, sew two of the three sides: the curve and the straight side—not the side with the flap. (Shown in black.)

Use pinking shears to trim the curved edge quite close, being careful not to cut into the seam. (Or use scissors to snip out little wedges and remove some bulk.)

Trim down the seam allowance on the straight side to about 1/8 or 1/4-inch.

Finally, clean up the corners on the remaining (open) side by cutting slits and removing wedges as shown in orange.



5. **Insert the card stock and top-stitch around.** Turn the piece right-side out and press the seams.

Use scissors to fringe the felt.

Slip the card stock neatly inside and tightly tuck and fold the raw/open ends to the inside, pulling the fabric snug for a smooth finish. Use clips to hold in place.

Top stitch about 1/8-inch from the edge the entire way around. (Yes, you will be stitching right through the card stock.)

6. **Seam the back & finish.** Curl the hat into a cone shape and hand stitch the seam (or use hot glue) to hold in place.

Attach a pompom to the top (either hand-sew or use hot glue) to finish.



