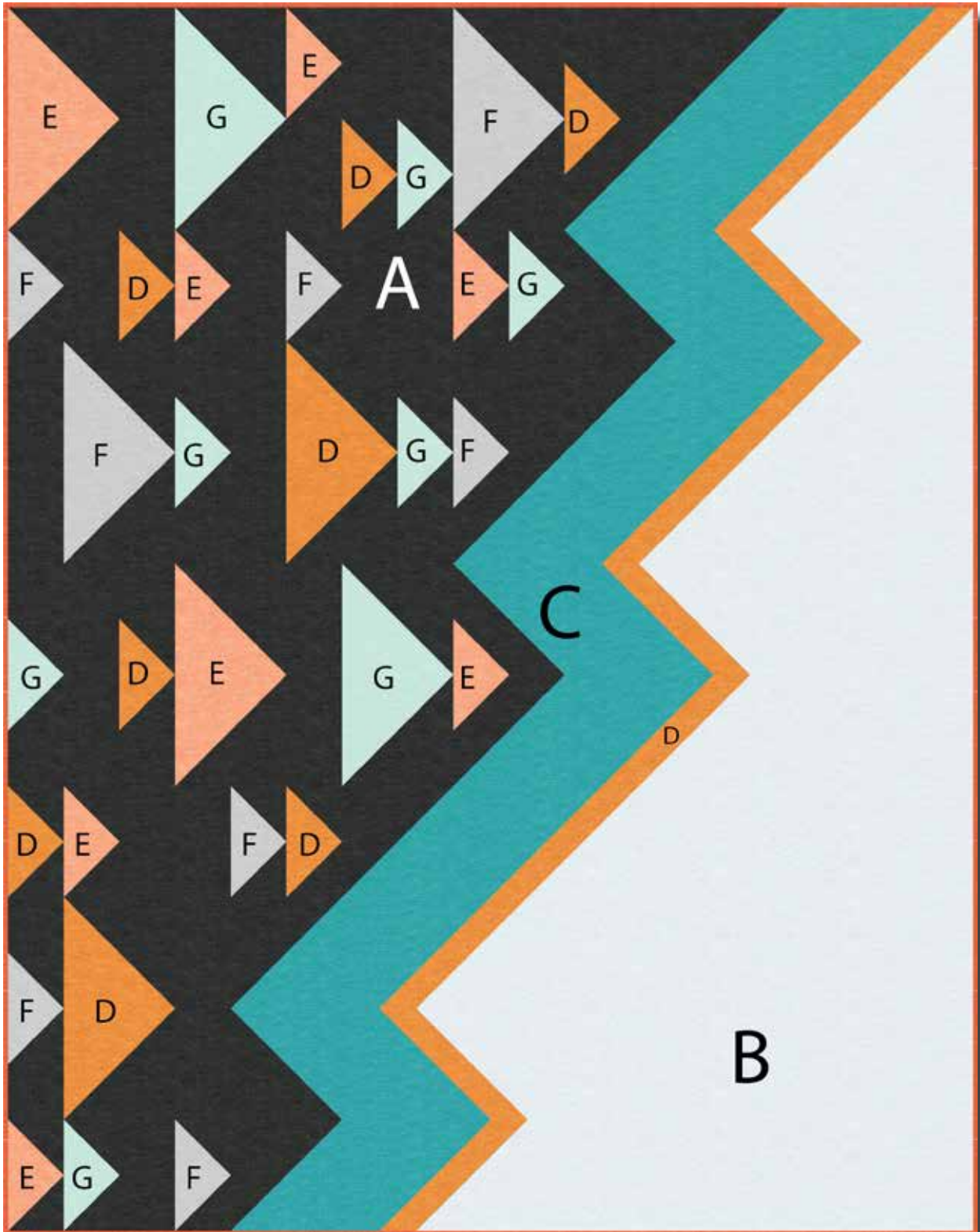


# Fast Forward Yardage Charts

A modern quilt by Amanda Murphy for BERNINA.

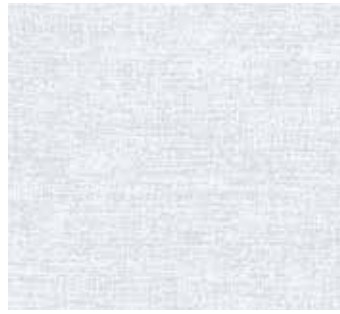


AMANDA *AM* MURPHY

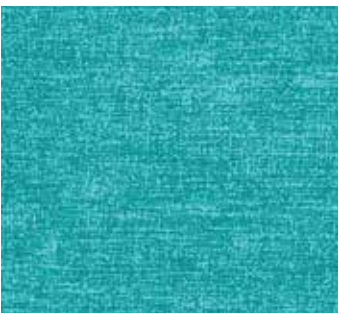
# Fast Forward Color Scheme A



**Fabric A:** Charcoal 9636-12  
Left Background  
2-1/4 yards



**Fabric B:** Platinum 9636-14  
Right Background  
1-1/2 yards



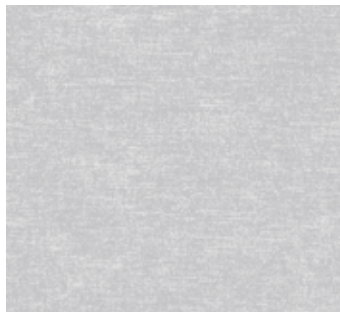
**Fabric C:** Aqua 9636-24  
Wide Zigzag  
1-1/4 yards



**Fabric D:** Pumpkin 9636-39  
Narrow Zigzag & Accent  
1-1/4 yards



**Fabric E:** Tangerine 9636-38  
Accent  
3/8 yard



**Fabric F:** Silver 9636-08  
Accent  
3/8 yard



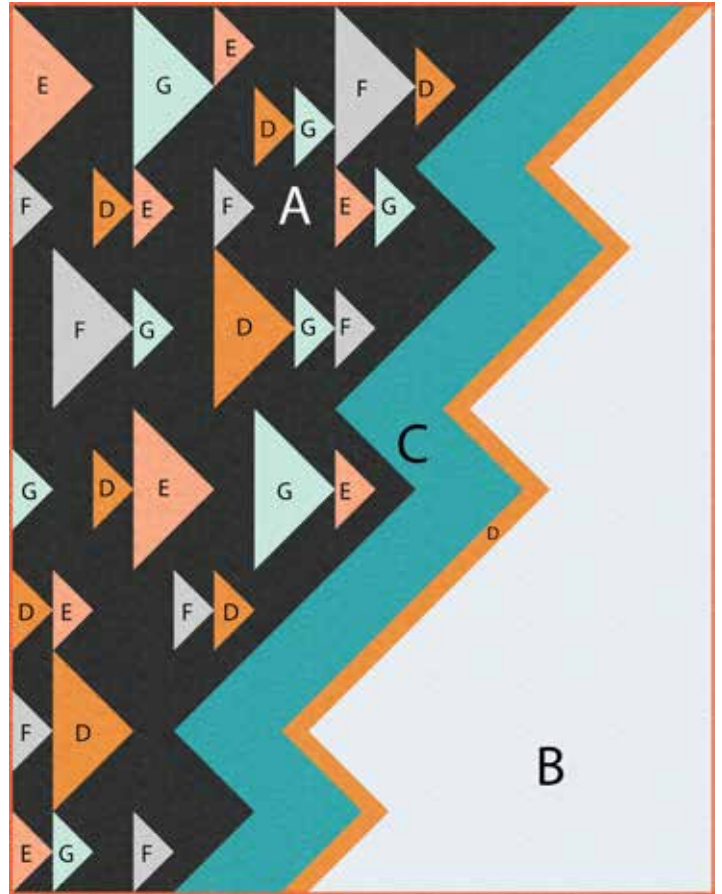
**Fabric G:** Spa 9636-57  
Accent  
3/8 yard



**Fabric H:** Marmalade 9636-27  
Binding  
1/2 yard



**Fabric I:** Steel 9636-13  
Pieced Backing  
3-1/2 yards



## Notes

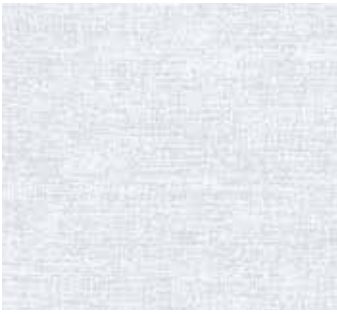
If you would like to make a special bonus project at the end of this quilt-along, buy an extra 1/4 yard of fabric C, an extra 3/4 yard of fabric H, and an extra 3/4 yard of the Fabric I. Fast Forward is a two-sided quilt, so make sure you like how the backing fabric (Fabric I) looks with the rest of the colors.

You will need the following Amanda Murphy Good Measure Quilting Templates to complete the quilting: **Every Ribbon Candy Set of 4, Every Circle, and Every Angle.**

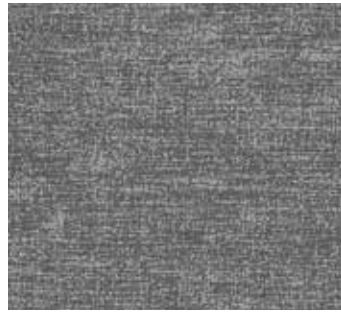
**Suggested Aurifil 50 wt. cotton thread colors** for quilting for this color scheme include: 2214, 2600, 2606, 2630, & 5006.



# Fast Forward Color Scheme B



**Fabric A:** Platinum 9636-14  
Left Background  
2-1/4 yards



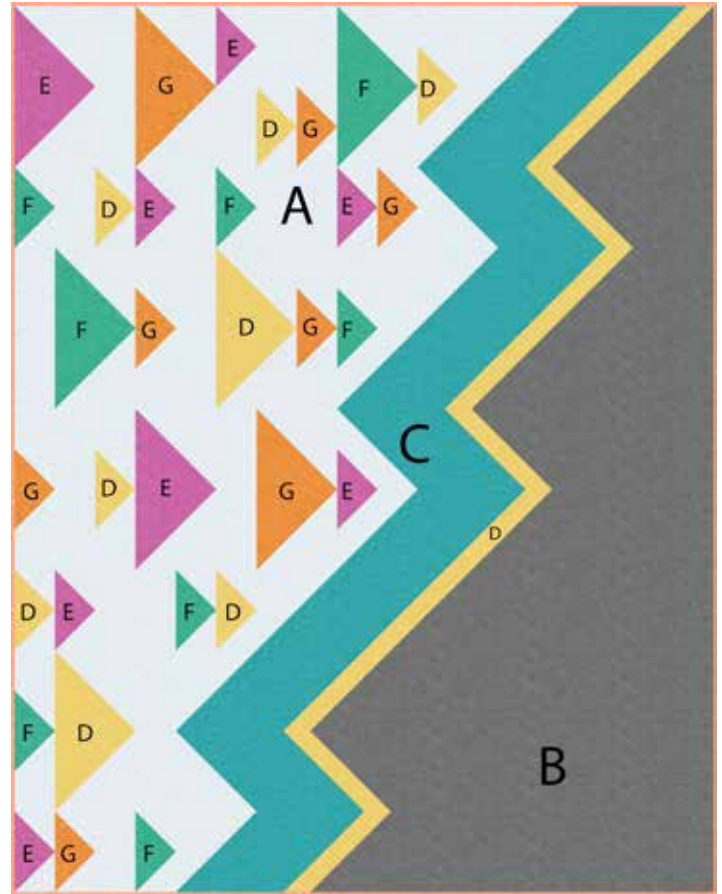
**Fabric B:** Steel 9636-13  
Right Background  
1-1/2 yards



**Fabric C:** Aqua 9636-24  
Wide Zigzag  
1-1/4 yards



**Fabric D:** Sunshine 9636-33  
Narrow Zigzag & Accent  
1-1/4 yards



**Fabric E:** Magenta 9636-15  
Accent  
3/8 yard



**Fabric F:** Jade 9636-47  
Accent  
3/8 yard



**Fabric G:** Pumpkin 9636-39  
Accent  
3/8 yard



**Fabric H:** Tangerine 9636-38  
Binding  
1/2 yard



**Fabric I:** Silver 9636-08  
Pieced Backing  
3-1/2 yards

## Notes

If you would like to make a special bonus project at the end of this quilt-along, buy an extra 1/4 yard of fabric C, an extra 3/4 yard of fabric H, and an extra 3/4 yard of the Fabric I. Fast Forward is a two-sided quilt, so make sure you like how the backing fabric (Fabric I) looks with the rest of the colors.

You will need the following Amanda Murphy Good Measure Quilting Templates to complete the quilting: **Every Ribbon Candy Set of 4, Every Circle, and Every Angle.**

**Suggested Aurifil 50 wt. cotton thread colors** for quilting for this color scheme include: 2021, 2105, 2600, & 5006.

# Fast Forward Color Scheme C



**Fabric A:** Lagoon 9636-53  
Left Background  
2-1/4 yards



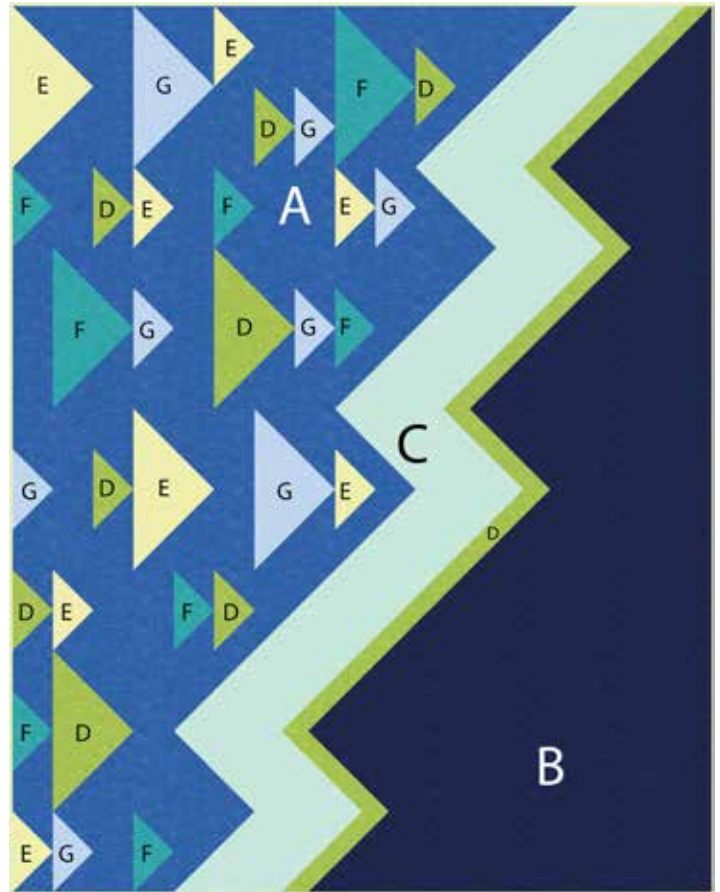
**Fabric B:** Indigo 9636-55  
Right Background  
1-1/2 yards



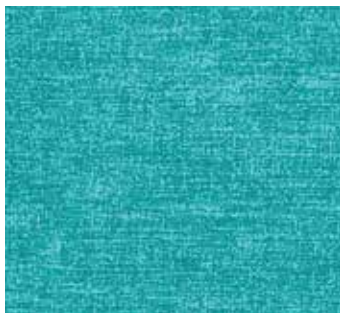
**Fabric C:** Spa 9636-57  
Wide Zigzag  
1-1/4 yards



**Fabric D:** Green 9636-40  
Narrow Zigzag & Accent  
1-1/4 yards



**Fabric E:** Apple 9636-42  
Accent  
3/8 yard



**Fabric F:** Aqua 9636-24  
Accent  
3/8 yard



**Fabric G:** Morning Mist 9636-59  
Accent  
3/8 yard



**Fabric H:** Melon 9636-49  
Binding  
1/2 yard



**Fabric I:** Ocean 9636-52  
Pieced Backing  
3-1/2 yards

## Notes

If you would like to make a special bonus project at the end of this quilt-along, buy an extra 1/4 yard of fabric C, an extra 3/4 yard of fabric H, and an extra 3/4 yard of the Fabric I. Fast Forward is a two-sided quilt, so make sure you like how the backing fabric (Fabric I) looks with the rest of the colors.

You will need the following Amanda Murphy Good Measure Quilting Templates to complete the quilting: **Every Ribbon Candy Set of 4, Every Circle, and Every Angle.**

**Suggested Aurifil 50 wt. cotton thread colors** for quilting for this color scheme include: 1128, 2715, 2800, & 2886.



# Fast Forward Color Scheme D



**Fabric A:** Plum 9636-68  
Left Background  
2-1/4 yards



**Fabric B:** Cerise 9636-29  
Right Background  
1-1/2 yards



**Fabric C:** Blush 9636-01  
Wide Zigzag  
1-1/4 yards



**Fabric D:** Green 9636-40  
Narrow Zigzag & Accent  
1-1/4 yards



**Fabric E:** Azalea 9636-28  
Accent  
3/8 yard



**Fabric F:** Peony 9636-21  
Accent  
3/8 yard



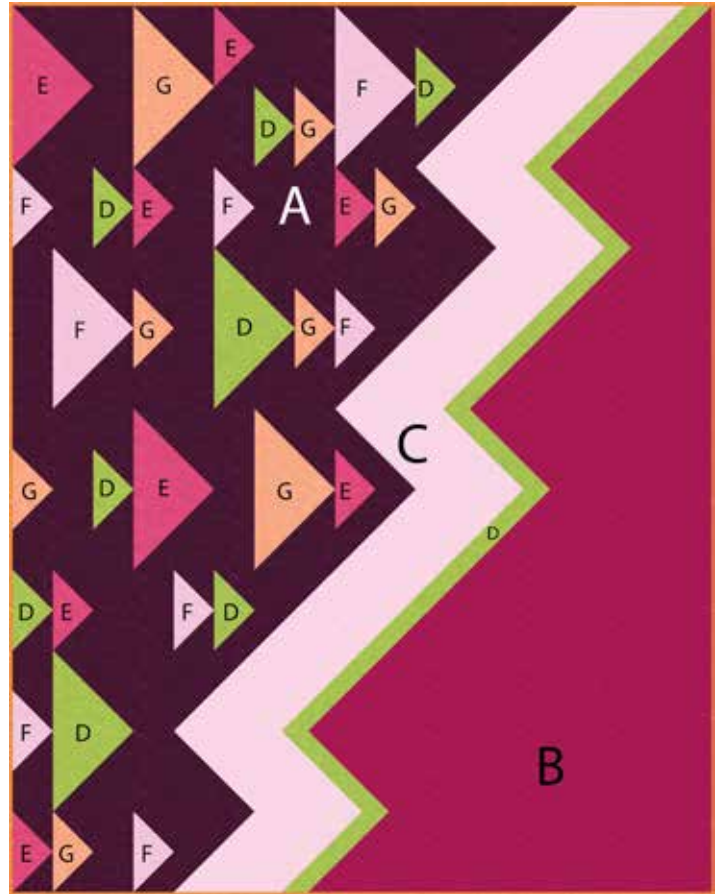
**Fabric G:** Tangerine 9636-38  
Accent  
3/8 yard



**Fabric H:** Marmalade 9636-27  
Binding  
1/2 yard



**Fabric I:** Apple 9636-42  
Pieced Backing  
3-1/2 yards



## Notes

If you would like to make a special bonus project at the end of this quilt-along, buy an extra 1/4 yard of fabric C, an extra 3/4 yard of fabric H, and an extra 3/4 yard of the Fabric I. Fast Forward is a two-sided quilt, so make sure you like how the backing fabric (Fabric I) looks with the rest of the colors.

You will need the following Amanda Murphy Good Measure Quilting Templates to complete the quilting: **Every Ribbon Candy Set of 4, Every Circle, and Every Angle.**

**Suggested Aurifil 50 wt. cotton thread colors** for quilting for this color scheme include: 2450, 2452, 2886, & 6723.