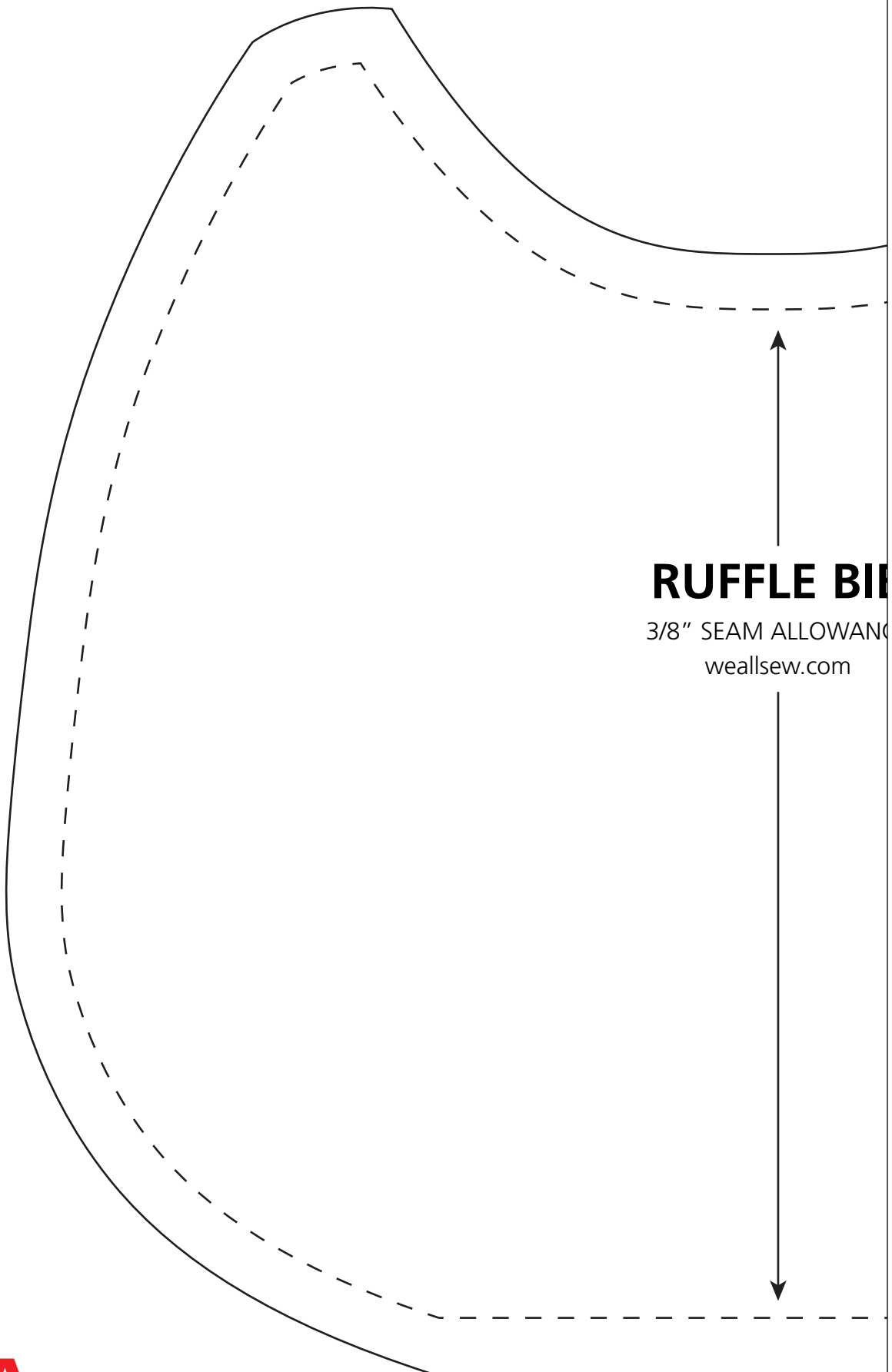


1 INCH

1 INCH



RUFFLE BIAS

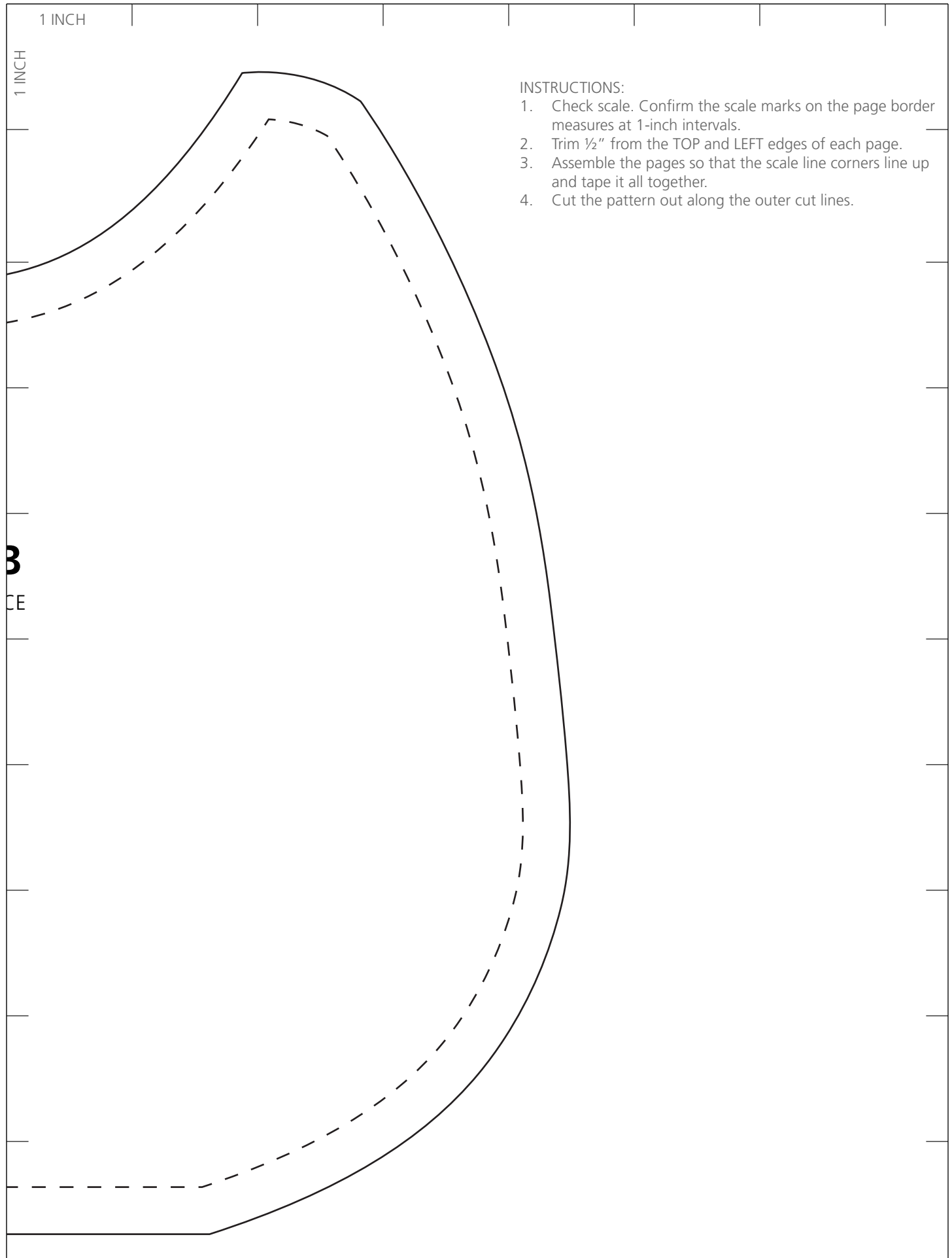
3/8" SEAM ALLOWANCE

weallsew.com

1 INCH

1 INCH

B
CE



INSTRUCTIONS:

1. Check scale. Confirm the scale marks on the page border measures at 1-inch intervals.
2. Trim 1/2" from the TOP and LEFT edges of each page.
3. Assemble the pages so that the scale line corners line up and tape it all together.
4. Cut the pattern out along the outer cut lines.