

How I Quilt It Episode 2: Courthouse Steps

Each block measures 10-1/2" x 10-1/2".

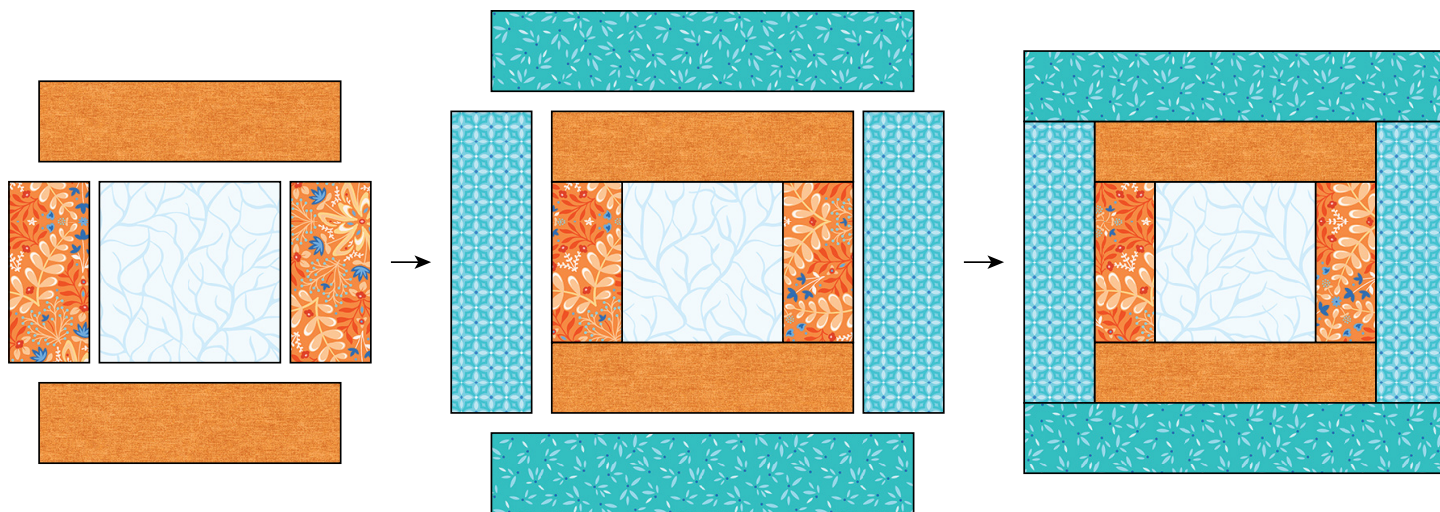
The fabrics featured are from Amanda Murphy's "Flora & Fauna" Forest collection for Contempo of Benartex and her Cotton Shot line.

Amanda pieced 4 blocks together to make a pillow top. After quilting she basted the top **WRONG SIDES** together to an envelope backing and bound it as she would a quilt.

"WOF" refers to width of fabric. All seams are 1/4". Press all seams open.

Cutting (for 1 block)

Center	1 square 4-1/2" x 4-1/2"
First set of "Steps"	2 rectangles 2" x 4-1/2" 2 rectangles 2" x 7-1/2"
Second set of "Steps"	2 rectangles 2" x 7-1/2" 2 rectangles 2" x 10-1/2"



Block Assembly

Join a First Steps rectangle 2" x 4-1/2" to each side of the block center.

Join a First Steps rectangle 2" x 7-1/2" to the top and bottom of the block center.

Join a Second Steps rectangle 2" x 7-1/2" to each side of the block center.

Join a Second Steps rectangle 2" x 10-1/2" to the top and bottom of the block center.

Quilting

Quilt following the videos on weallsew.com and my YouTube Channel, [AmandaMurphyDesign!](https://www.youtube.com/channel/UC...)

Follow me on YouTube:



and on Instagram
[@amandamurphydesign!](https://www.instagram.com/amandamurphydesign/)

Visit my website:



and my Facebook Group,
Quilting with Amanda Murphy