

Dice Bag

with Pockets

A versatile dice bag featuring separate interior pockets keeps your gaming dice organized and protected. The bag closes with a drawstring top and includes multiple compartments sized perfectly for different polyhedral dice sets so they stay as beautiful as the day you got them!



MACHINE & ACCESSORIES

- bernette 79
- Zigzag Foot (DA)
- Zipper Foot (JB)
- Buttonhole Foot with Slide (RJ)

TEMPLATES

Print and assemble the three circle templates (included): Large Circle, Medium Circle, and Small Circle.

FABRIC & INTERFACING

Suggested fabrics: medium-weight wovens such as quilting cotton, twill, canvas, velvet, or corduroy. It is recommended that beginners avoid stretch materials.

- Bag: ½ yard
- Lining: ½ yard
- (Optional) Woven Fusible Interfacing: ½ yard
 - Skip if using heavier weight wovens, fabrics that cannot be ironed, or specialty fabrics such as velvet or corduroy
- OESD Fiber Form: 6" x 6"

NOTIONS & SUPPLIES

- 80/12 Microtex needle
- Sewing thread
- (2) cords or ribbons, 45" long
- Marking pen
- Fabric scissors
- Wonder Clips or sewing pins
- Iron
- Point turner
- Safety Pin or Bodkin
- Glue stick or basting spray
- Iron on Adhesive tape (optional)



BERNINA *made to create*

Copyright © 2024 BERNINA of America. Content may not be altered or used under any other branding. | bernina.com

INSTRUCTIONS

PREPARE FABRIC

1. Press fabric to remove all wrinkles and creases.
2. Cut pattern pieces, using the included templates, and mark each piece with the corresponding letter to differentiate:
 - **Bag Fabric:** One Large Circle (A) and one Medium Circle (B)
 - **Lining Fabric:** One Large Circle (C) and one Medium Circle (D)
 - **Fusible Interfacing (if applicable):** One Large Circle
 - **OESD Fiber Form:** One Small Circle Template
3. If using fusible interfacing, fuse it to the wrong side of piece A.
4. Fold the Medium Circle Template along the dotted lines and use that to mark each segment on piece B. You should have eight equal pockets.
5. Mark the buttonhole placements on the right side of piece A.
6. Use the Large and Medium Circle templates to mark the center 2" cut line on the wrong side of both lining fabric pieces (C and D).

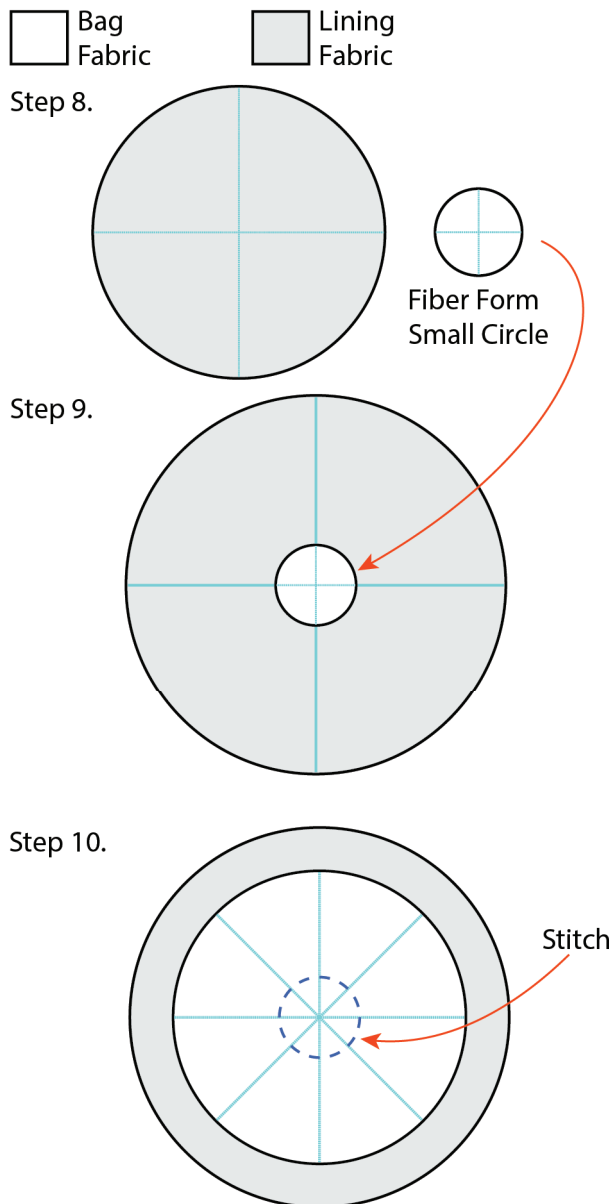
MACHINE SET UP FOR SEWING

1. Attach Buttonhole Foot with Slide (RJ).
2. Insert 80/12 Microtex needle.
3. Thread needle and wind bobbin with matching sewing thread.

SEWING THE DICE BAG

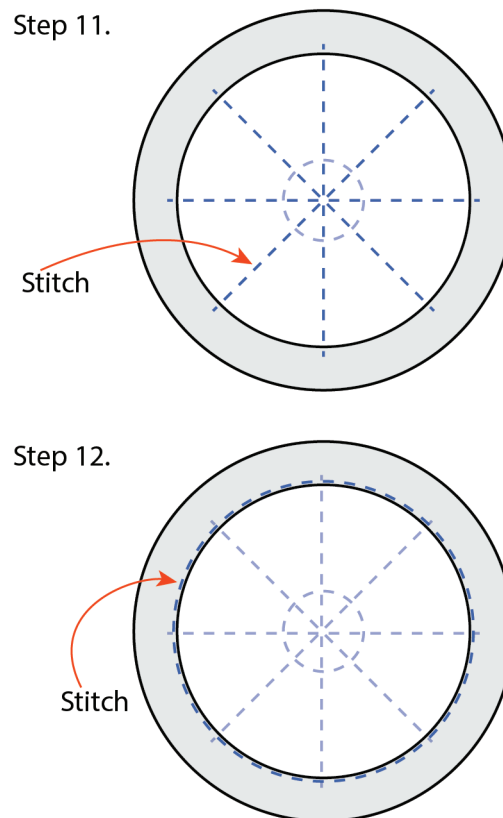
1. Sew two buttonholes on the right side of piece A. Cut out the buttonhole centers, being careful not to rip the stitching.
2. Remove the Buttonhole Foot with Slide (RJ) and attach Zigzag Foot (DA). Place pieces A and C right sides together and sew all the way around with a ½" seam allowance, without leaving a gap in the stitching. This is now the Large Circle. Repeat with pieces B and D to create the Medium Circle.
3. Cut notches around both sewn circles being very careful not to cut the stitching.
4. Pull apart the pieces of fabric of the Large Circle to ensure you have only the lining fabric (C side) and cut the line carefully. **DO NOT CUT THE BAG FABRIC PIECE.** Repeat for the lining (D side) of the Medium Circle.
5. Turn the circles through the holes in the lining; use a chopstick or point turning tool to help work the seams out. Press thoroughly. Take care to ensure this is done well.
6. Optional: After ironing and working of the seams, iron a 2 ½" piece of iron-on adhesive tape over the cut line for turning on both circles to prevent the fabric from unraveling. Alternatively, a 1" x 2 ½" scrap of fusible interfacing can be used.
7. Topstitch both circles 1/8" from the edge.
8. On the lining fabric (C) side of the Large Circle, mark the center length and width. Mark the center of the OESD Fiber Form Small Circle the same way.

9. Center the Small Circle onto the center of the Large Circle lining. Use the glue stick or basting spray on the back of the Small Circle piece to baste it in place.
10. Center the Medium Circle, bag fabric (B) facing up, on top of the Small Circle and Large Circle. Change to Zipper Foot (JB), attaching to the left



side of the foot, and move the needle to the left-most position. Stitch around the Small Circle to secure it in place.

11. Attach the Zigzag Foot (DA) and reset to the center needle position. Sew along the pocket line marks on the Medium Circle. Be sure to backstitch at the beginning and end of each line and start and stop 2-3 stitches off the pocket piece to secure the pockets.
12. Attach the Zipper Foot (JB) onto the left side of the foot, and move the needle to the left-most position. Stitch just around the outside edge of the Medium Circle, 1 ½" in from the edge of the Large Circle. This should enable you to just skim the inner edge of the buttonholes (ensure

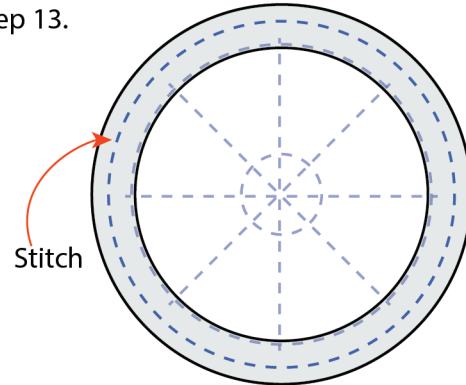


you don't stitch over the buttonhole openings or close any of the eight pockets).

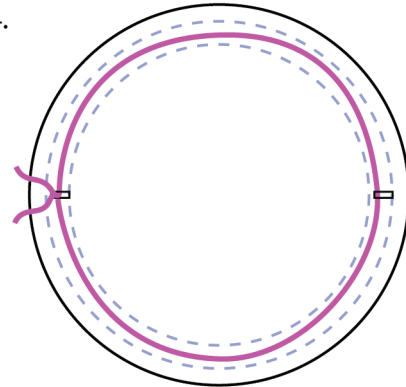
13. Attach the Zipper Foot (JB) to the right side of the foot and set the needle to the far-right position. Stitch around the Medium Circle again, just skimming the outer edge of the buttonholes (ensure you don't stitch over the buttonhole openings). This creates the 1/2" channel for the ribbon or cording.
14. Attach the bodkin or safety pin to one end of one cording or ribbon piece. Feed it through the buttonhole, skip the buttonhole opposite, and come back out the same buttonhole it where it was fed through.
15. Repeat Step 14 for the second buttonhole with the second ribbon or cording piece.
16. Cut ribbon to desired length. Tie the ribbon ends together or add a cord lock.



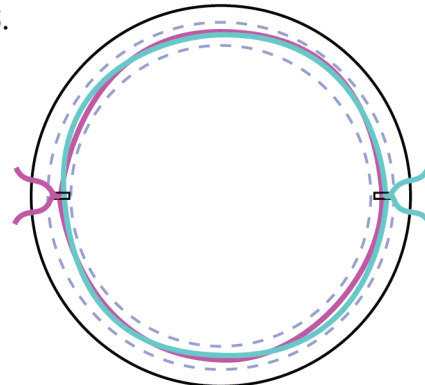
Step 13.



Step 14.



Step 15.



1 INCH

1 INCH

INSTRUCTIONS:

1. Check scale.
2. Confirm the scale marks on the page border measures at 1-inch intervals.
3. Trim $\frac{1}{2}$ " from the TOP and LEFT edges of each page.
4. Assemble the pages so that the scale line corners line up and tape it all together.
5. Cut the pattern out along the outer cut lines.



Buttonhole

1 INCH

1 INCH

BERNINA

made to create

www.weallsew.com

Sew Your Own DND Dice Bag

LARGE CIRCLE TEMPLATE

Cut 1 each from Bag (A) and Lining (C) fabrics

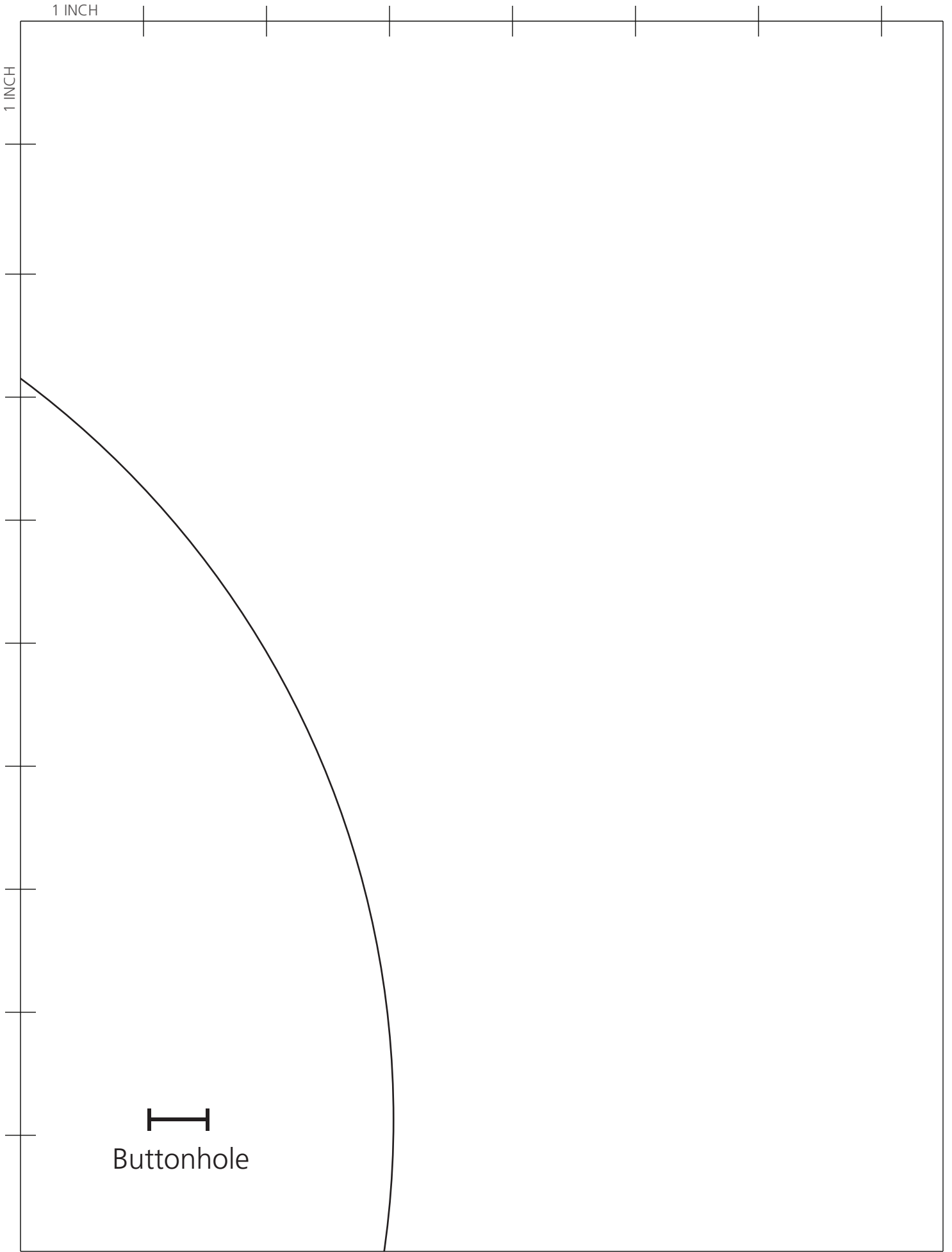
Cut 1 from Interfacing

Line for Lining Fabric Only



1 INCH

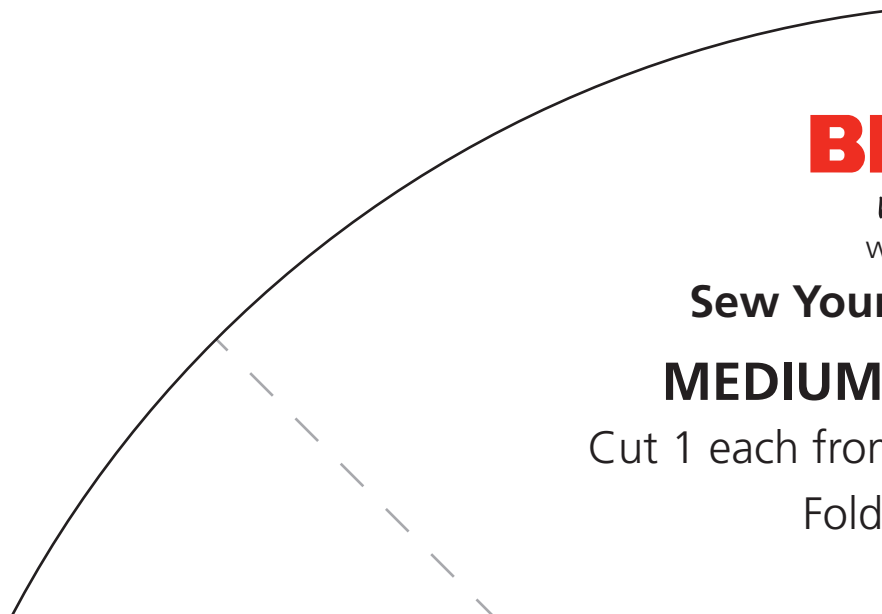
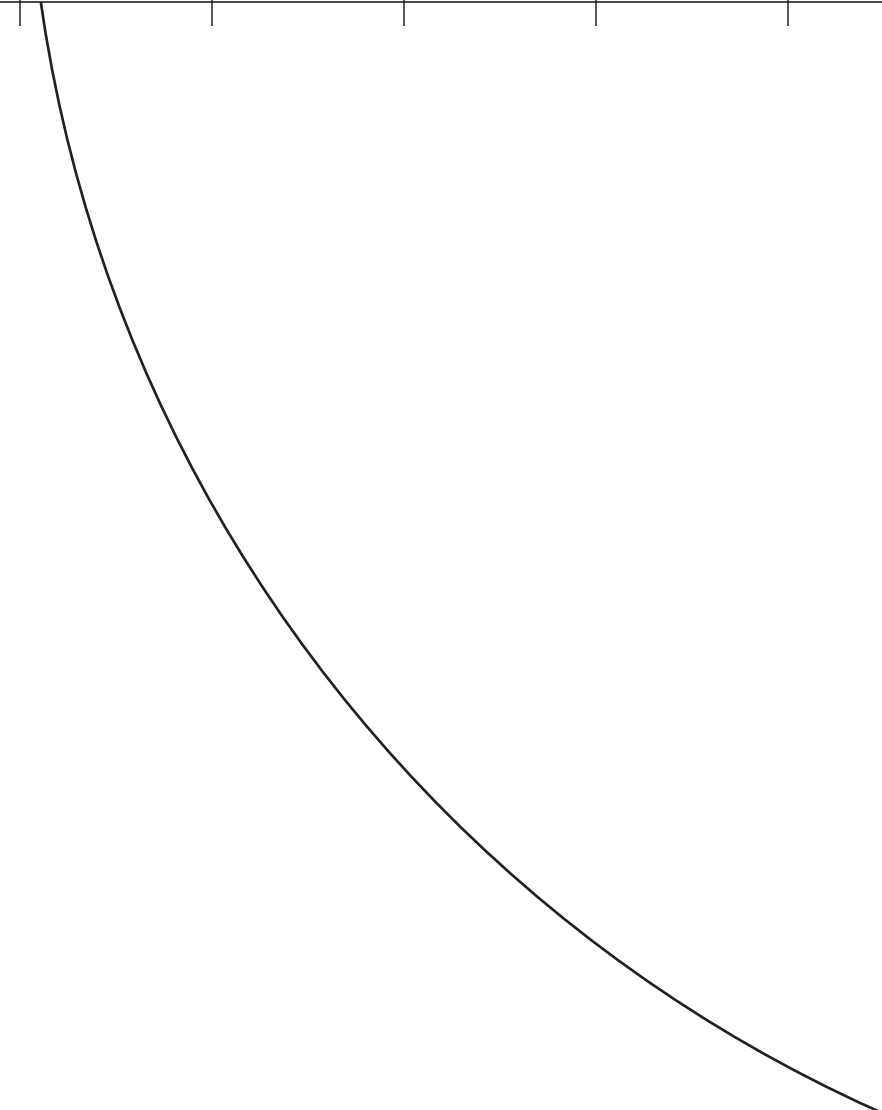
1 INCH



Buttonhole

1 INCH

1 INCH



BI

w

Sew Your

MEDIUM

Cut 1 each from

Fold

1 INCH

Cut

1 INCH

ERNINA

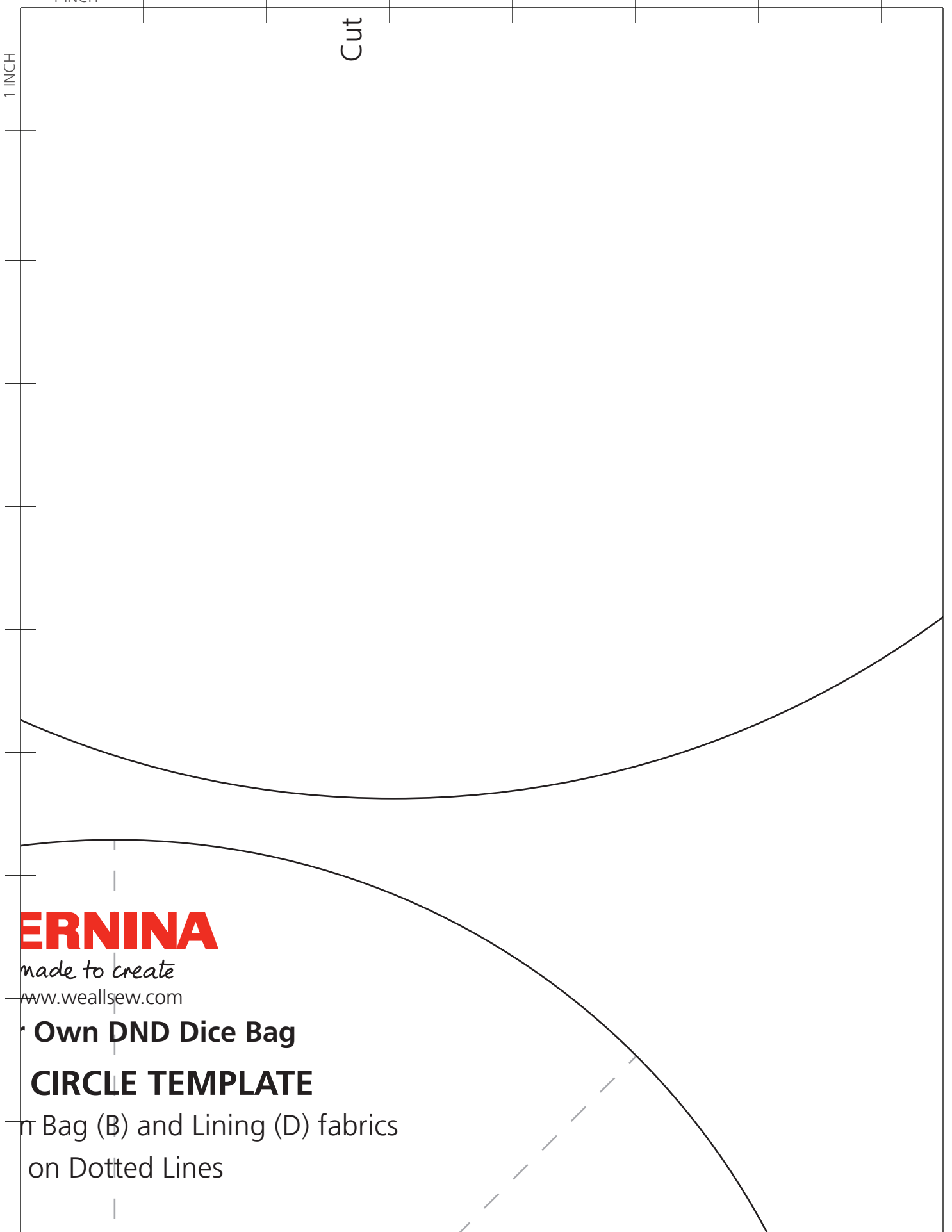
made to create

www.weallsew.com

Own DND Dice Bag

CIRCLE TEMPLATE

on Bag (B) and Lining (D) fabrics
on Dotted Lines



1 INCH

1 INCH

BERNINA

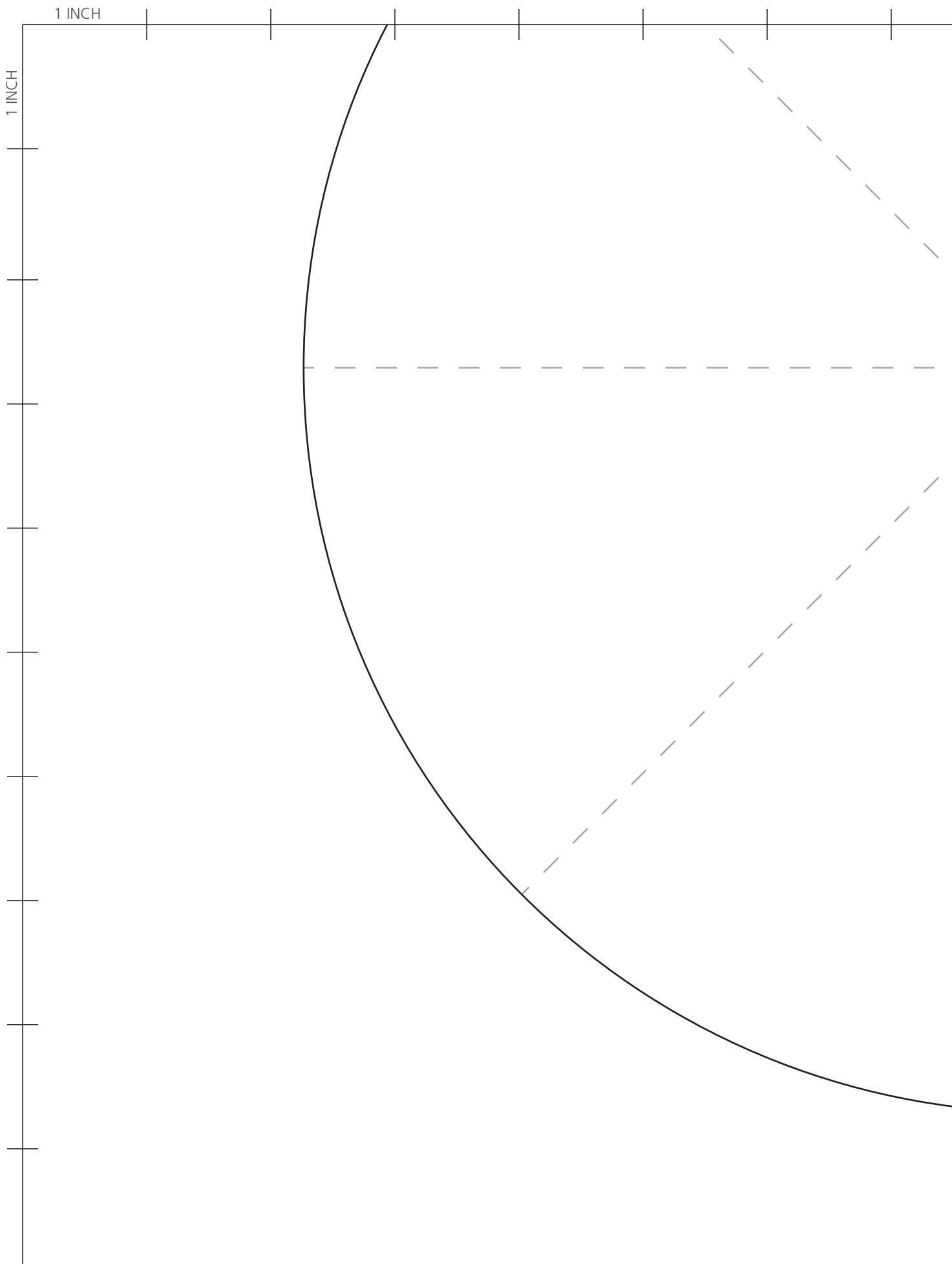
made to create

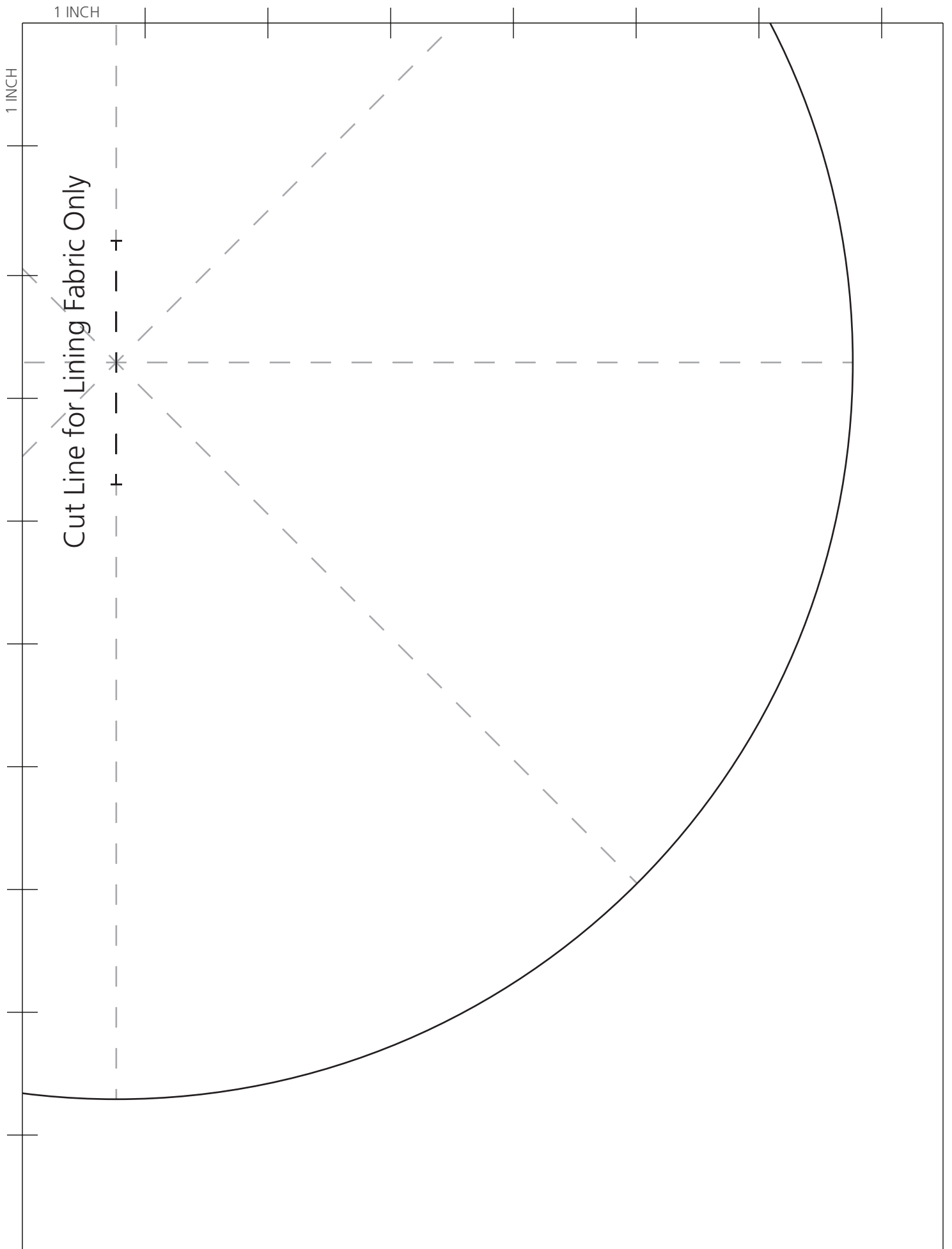
www.weallsew.com

Sew Your Own DND Dice Bag

SMALL CIRCLE TEMPLATE

Cut 1 from Fiber Form





Cut Line for Lining Fabric Only

BERNINA
made to create