

we all

sew

made to create **BERNINA**

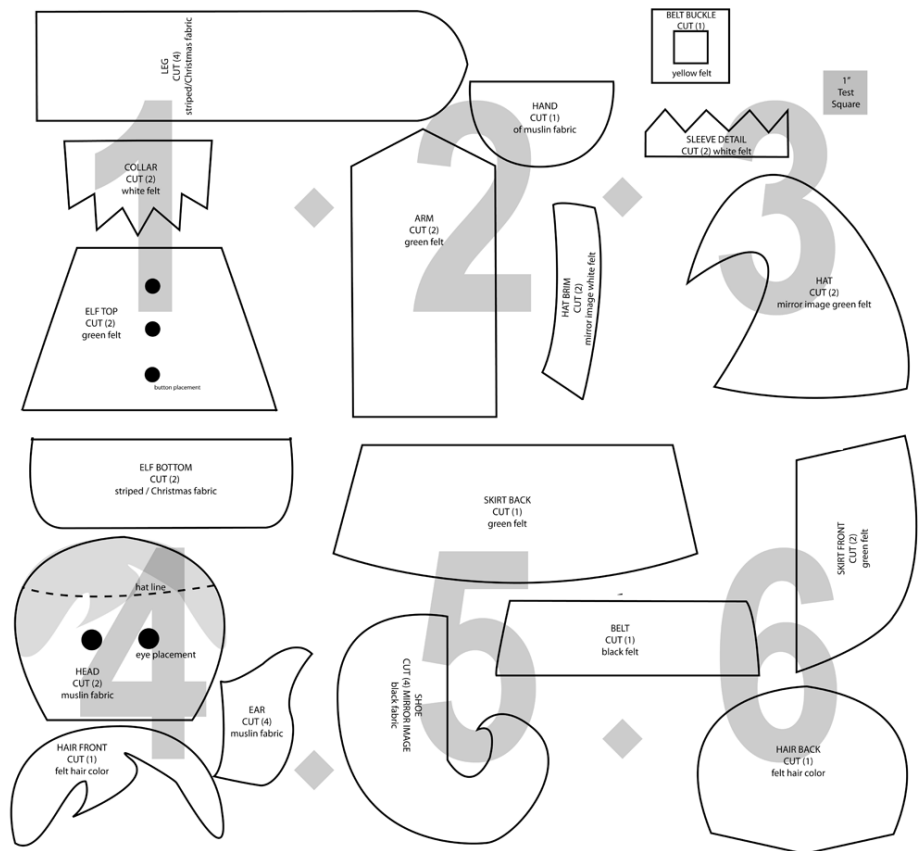


created by Jessica Abbott

CHRISTMAS Elf

Visit WeAllSew.com for Diy Christmas Elf instructions.

Elf Pattern Page Layout



Visit Jessica Abbott, The Sewing Rabbit, at MeSewCrazy.com





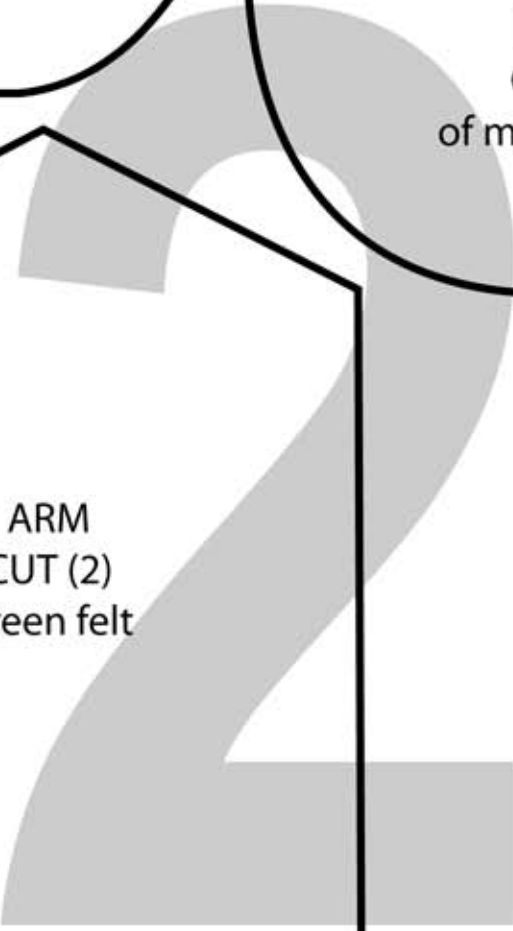
LEG
CUT (4)
striped/Christmas fabric

COLLAR
CUT (2)
white felt

ELF TOP
CUT (2)
green felt



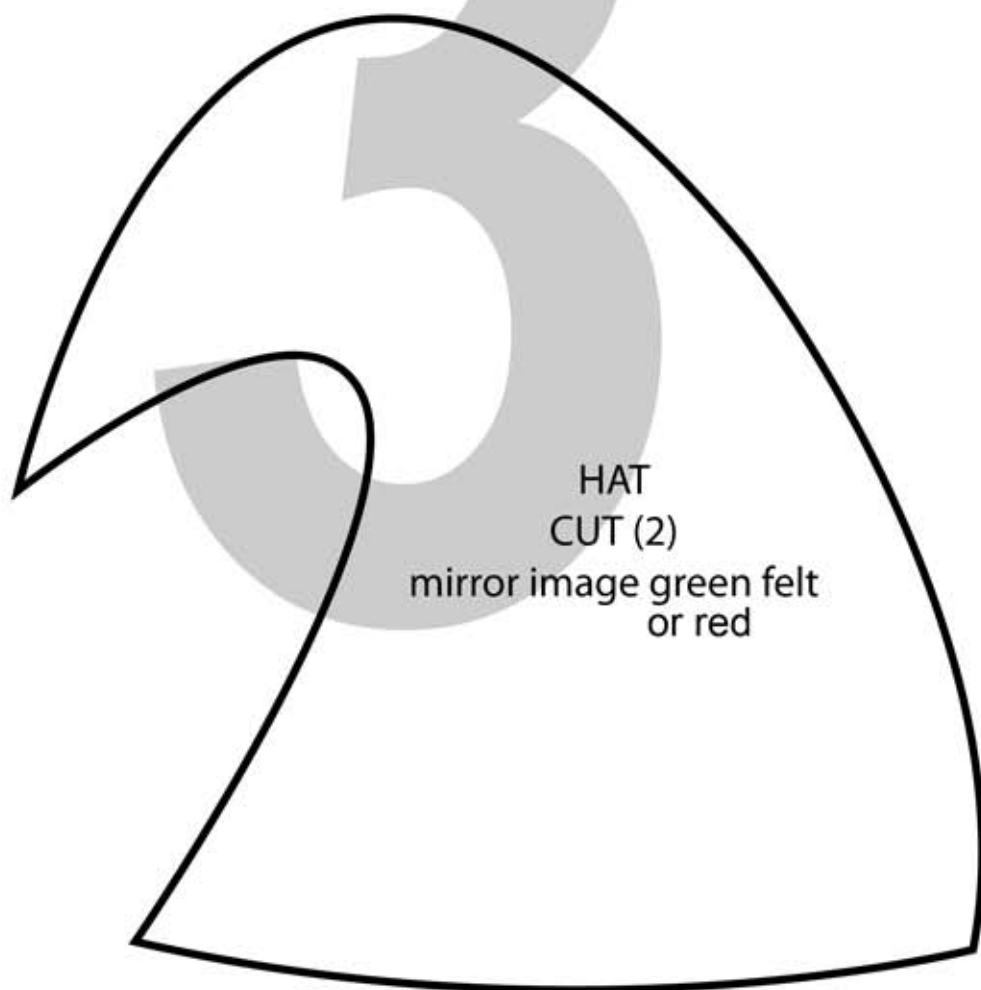
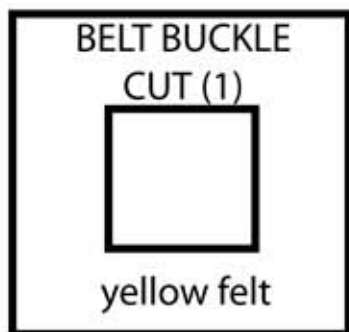
button placement



HAND
CUT (4)
of muslin fabric

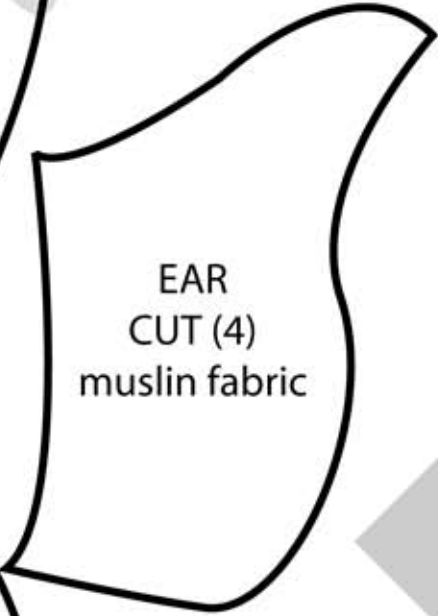
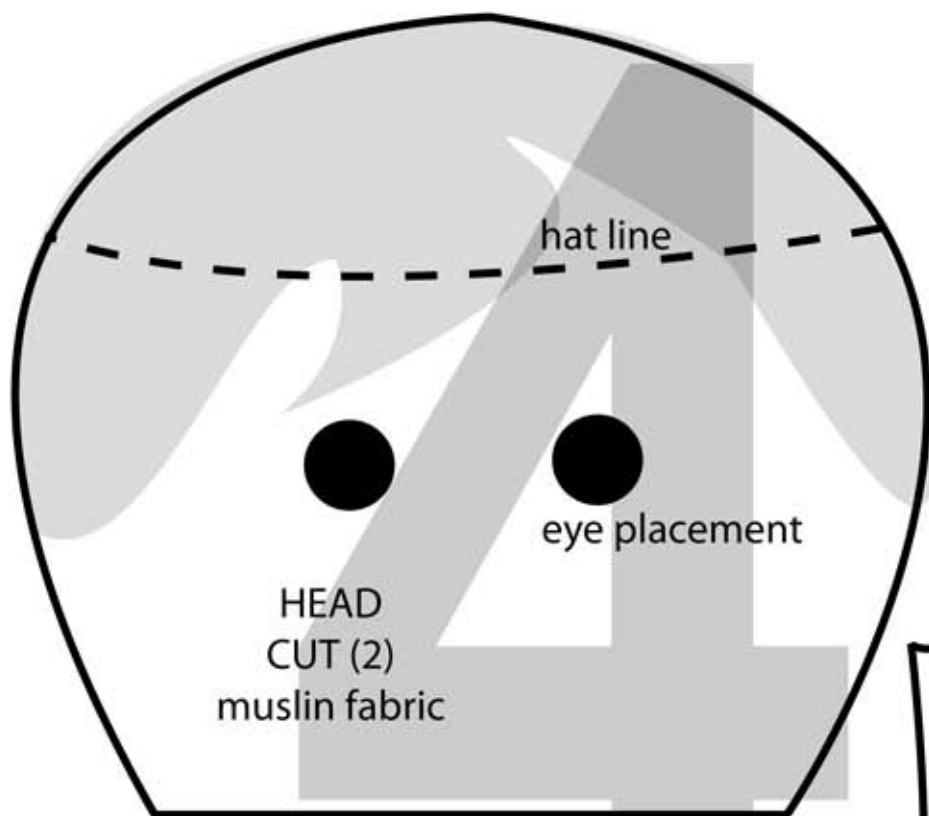
ARM
CUT (2)
green felt

HAT BRIM
CUT (2)
mirror image white felt

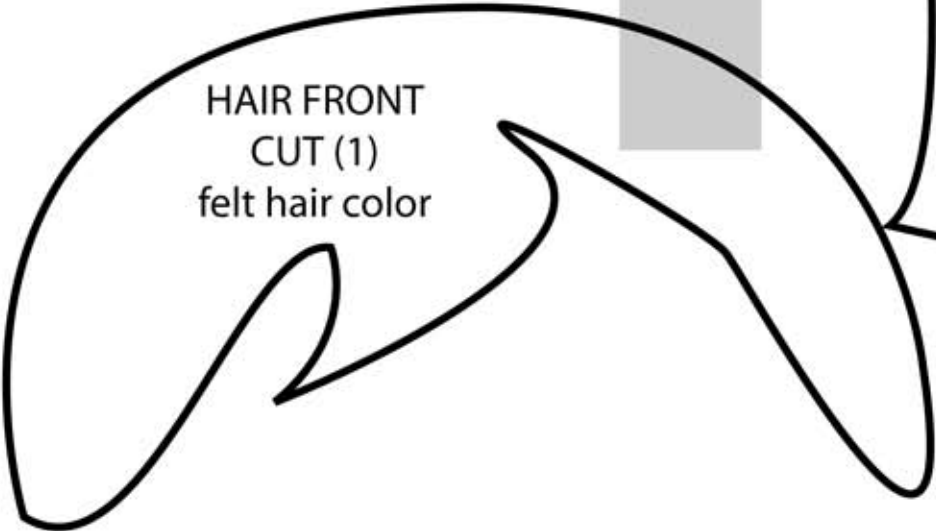




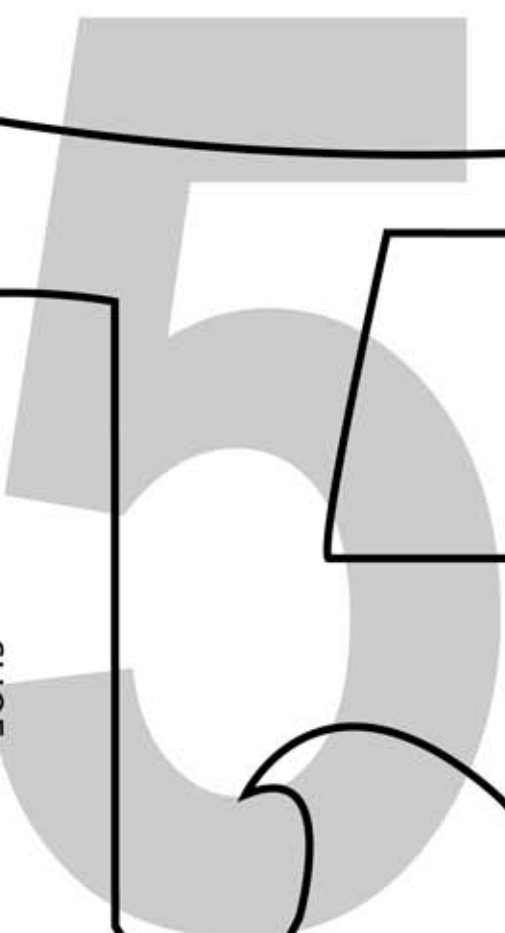
ELF BOTTOM
CUT (2)
striped / Christmas fabric



EAR
CUT (4)
muslin fabric



HAIR FRONT
CUT (1)
felt hair color



SKIRT BACK
CUT (1)
green felt

BEI
CUT
black

SHOE
CUT (4) MIRROR IMAGE
black fabric



SKIRT FRONT
CUT (2)
green felt

The image shows three pattern pieces. The 'SKIRT FRONT' piece is a large, curved shape with a straight edge on the left and a curved edge on the right. The 'HAIR BACK' piece is a large, roughly circular shape with a small notch at the bottom. The 'SKIRT BACK' piece is a smaller, curved shape with a straight edge on the left and a curved edge on the right. All pieces are outlined in black and labeled with their respective names, cut counts, and materials.

HAIR BACK
CUT (1)
felt hair color

SKIRT BACK
(2)
felt