

# we all *sew*

made to create **BERNINA**<sup>+</sup>



created by Handmade Charlotte

## Super Simple Envelope Clutch

Update your warm weather wardrobe with this super simple but extremely hip clutch.

This sweet little purse is a beginner to intermediate project. You'll be shocked at how fast this sews up. You can go the sweet and subtle route like we did or add a funky pattern.

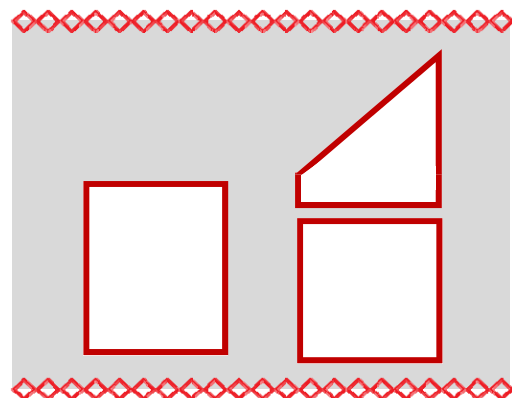
### materials and tools

- ½ yard of heavyweight fabric such as canvas, duck cloth, linen, or leather
- 2 yards of leather cord
- Medium-weight interfacing (optional)
- Matching thread
- Chalk pencil or fabric marker
- Clear gridded ruler
- Tape
- Fabric shears
- Rotary cutter and mat (optional)
- All-purpose foot (BERNINA Reverse Pattern Foot #1/1C/1D)



### step one

- Cut out the pattern pieces provided on pages 4-6.
- Outer clutch pattern piece (tape part 1 to part 2)
  - ◊ Cut two from fabric on the fold (one will be the lining)
  - ◊ Cut one from interfacing on the fold
- Inner clutch pattern piece
  - ◊ Cut one from fabric on the fold



# we all sew

made to create **BERNINA**<sup>+</sup>

## Super Simple Envelope Clutch

### step two

- Lay the outer pieces down in this order:
  - ◊ Lining, right side down
  - ◊ Interfacing
  - ◊ Outer piece, right side up
- Finally, place the inner piece on top, right side down.

### step three

- Pin the layers in place all the way around the clutch, including the triangular flap.

*Tip: I chose to use linen for my inner piece. Because linen can be tricky to sew, I applied a lightweight fusible interfacing to the inside to give it a bit more structure.*

### step four

- Now you're ready to sew! Beginning at one of the top edges of the inner piece, back-tack a few stitches and sew all the way around the square edges with a  $\frac{1}{2}$ "-wide seam allowance. Back-tack a few stitches once you get to the opposite side of the inner piece.

### step five

- Once you get close to the triangular edges, put the needle down in the fabric, raise the presser foot, and pivot. Sew along the edge of the flap using a  $\frac{1}{4}$ "-wide seam allowance and return to your starting point.
- Trim any loose threads.



# we all *sew*

made to create **BERNINA**<sup>+</sup>

## Super Simple Envelope Clutch

### step six

- Clip the corners to ¼" at the bottom of your clutch.
- Trim the seam allowances to ¼" at the edges.
- If necessary, trim the edges of your flap using a rotary cutter and clear gridded ruler.

### step seven

- Flip your clutch right side out and carefully shape the bottom corners.



### step eight

- Fold the flap over the edge of the inner piece and firmly press the flap down over the clutch using the steam setting on your iron.



### step nine

- Wrap the leather cord around your clutch and tie the ends together.



**we all** sew

made to create **BERNINA**<sup>+</sup>

Super Simple  
Envelope Clutch

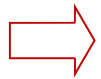
**envelope clutch**

**- inner clutch pattern piece**

- ◇ **cut one on fold from main fabric**



**cut one on fold**



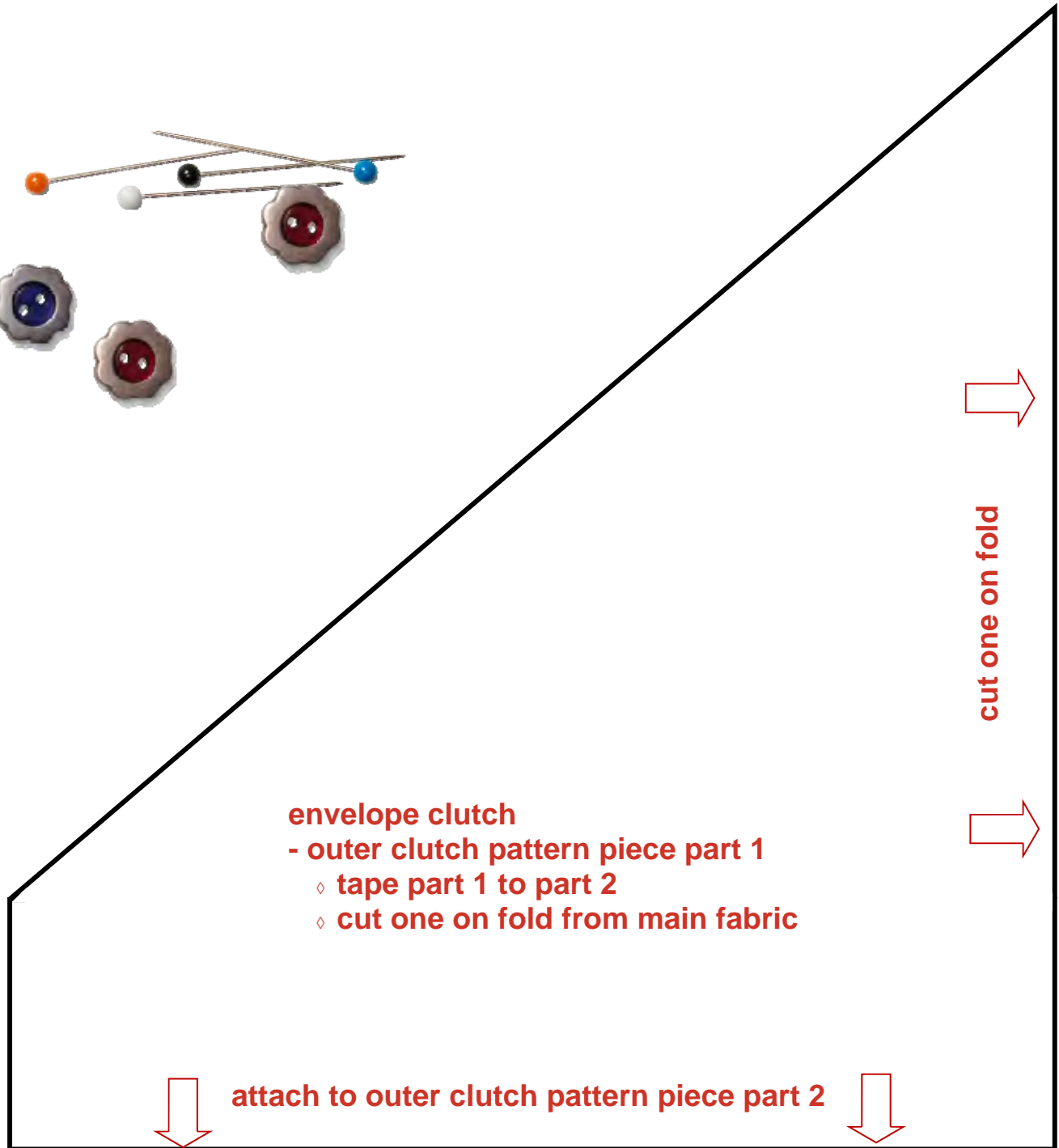
# we all sew

made to create **BERNINA**<sup>+</sup>

Super Simple  
Envelope Clutch



## envelope clutch—outer pattern piece part 1



**we all** Sew

made to create **BERNINA**<sup>+</sup>

Super Simple  
Envelope Clutch



envelope clutch—outer pattern piece part 2

